



Kee Safety: **Your Complete** **Fall Protection** **Partner**

SEPARATING PEOPLE FROM HAZARDS

www.keesafety.com



Safeguarding Your Workforce with Kee Safety

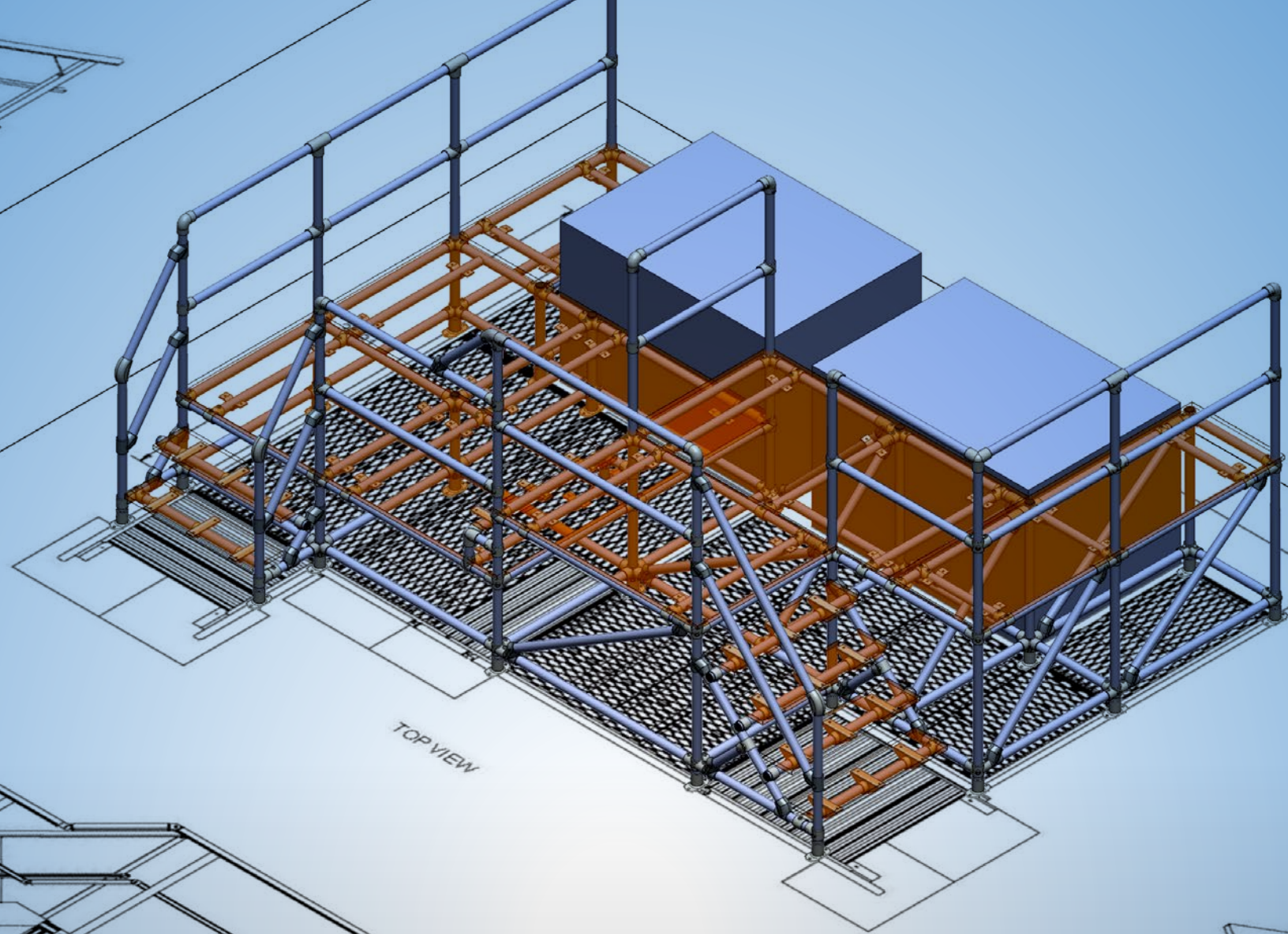
Our extensive range of products and services is designed to meet the diverse needs of various industries, ensuring that every workplace is secure and compliant with safety regulations.

From rooftop safety solutions to comprehensive fall protection systems, Kee Safety is your trusted partner in workplace safety. Our team of experts works closely with clients to understand their unique challenges and provide tailored solutions that address specific risks. By choosing Kee Safety, you are investing in a commitment to quality, excellence, and the well-being of your workforce.

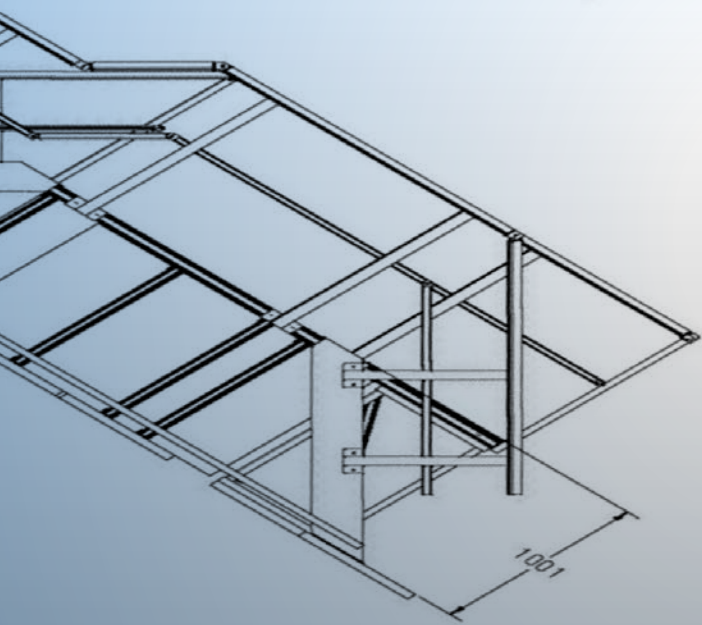
Contents

Our mission is to ensure the highest level of safety for workers at heights through innovative and reliable products. This brochure details our extensive range of fall protection systems designed to safeguard your workplace. From horizontal lifelines to guardrails, each product is engineered to meet stringent safety standards and provide peace of mind. Explore our offerings and discover how Kee Safety can help you create a safer environment for your team.

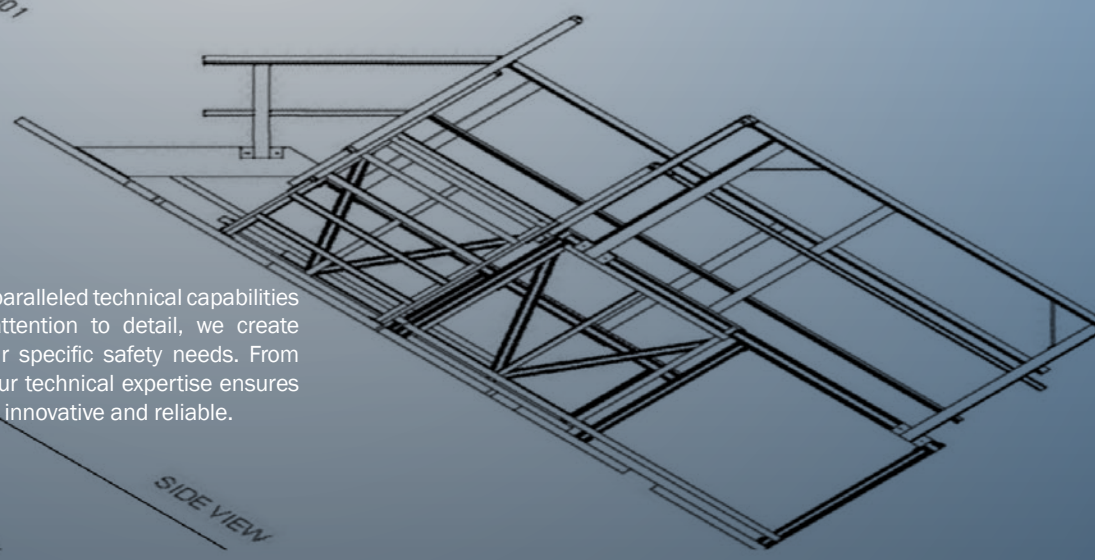
Access Points	10
Kee Hatch Railing	14
Kee Guard Ladder Kit	16
Rooftop Openings	18
Kee Dome Skylight Railing	22
Kee Cover Skylight Screens	24
Unprotected Edges	26
Kee Guard Safety Rail	30
Kee Line Horizontal Lifeline	34
Kee Anchor Deadweight Anchor	36
Kee Post Permanent Roof Anchor	38
Kee Mark Warning Line	40
Rooftop Obstacles	42
Kee Step Mini Stepmover	46
Kee Step Rooftop Crossovers	48
Kee Walk Rooftop Walkway	50
Kee Static Work Platform	52
Facility Falls	54
Kee Gate Self Closing Safety Gates	58
Kee Kwik Railing Kits	60
Kee Pivot Pallet Gates	62
Kee Track Rigid Rail	64



TOP VIEW



1001



SIDE VIEW

Technical Expertise You Can Trust

Keen Safety's Engineering Team brings unparalleled technical capabilities to every project. With precision and attention to detail, we create comprehensive solutions that meet your specific safety needs. From detailed blueprints to custom designs, our technical expertise ensures that your rooftop safety systems are both innovative and reliable.

Benefits of Working with Kee Safety

Full Solution Provider

Kee Safety has an extensive range of fall protection solutions which ensures that you benefit from our comprehensive product range. Our trained industry specialists can assist from concept to project completion.

Nationwide Coverage

Kee Safety has a team of regional experts located strategically throughout the mainland United States. Any rooftop in America is easily accessible to our team, ensuring prompt service and the ability to provide personal and expert service quickly and effectively.

Expert Team

Our Regional Sales Team is fully trained in OSHA compliance and we prioritize these safety standards to solve your rooftop fall protection concerns. This expertise and industry knowledge provides you with a comprehensive fall protection system that reduces risk and saves lives.

Personalized Customer Service

Our staff are here to assist you in every aspects of your project with no question too big or too small. We work closely with you to ensure the design of our systems meet your needs and ensure the safety of your staff, contractors and your facility while adhering to OSHA and local safety requirements. Kee Safety is committed to working in partnership with you from initial inspection and assessment to system installation and service requirements throughout the life of the fall protection systems.

Quick Response Time

We understand that responding to your clients with immediacy is important. We are committed to providing first-class service, with prompt turnaround on quotes, and timely product availability.

Engineering and Technology

As a Kee Safety customer, you receive exclusive access to our Engineering Team for your projects. We can provide a complete review of your layouts, supply detailed installation drawings, expert technical advice and customized solutions to address the specific safety challenges on your rooftop.

Training

In accordance with the requirements of OSHA, employers are responsible for ensuring all employees are properly trained to safely use the fall protection products and systems. Kee Safety offers training classes and solutions to help promote safety at your facility.

Training is free and includes:

- Product Introductions
- On-site Demonstrations
- Comprehensive Installation Training

Comprehensive Rooftop Safety Audit

Kee Safety fall protection experts perform a critical analysis of the entire rooftop surface to identify the hazards where workers are exposed to the greatest risk. This ensures that the most dangerous areas are protected immediately with state-of-the-art fall protection systems and OSHA compliant solutions. This service is designed to provide you with an assessment to ensure worker safety and prevent the risk of falls.



Rooftop Safety Audit:

Comprehensive Risk Assessment and Solutions

As fall protection experts, we conduct a thorough analysis of your rooftop to identify the areas where your workers are most at risk. This allows us to prioritize and implement state-of-the-art systems and OSHA-compliant solutions to ensure maximum safety.

Our Process:



On-Site Analysis: Our experts perform a detailed assessment of your rooftop to pinpoint potential hazards.



Survey Evaluation Report: We provide a comprehensive report that highlights identified risks and offers actionable recommendations.



Professional Installation: Leveraging our nationwide network of certified integrators, we ensure that your safety systems are installed to the highest standards.



System Certification: We certify that all installed systems meet OSHA compliance, providing you with peace of mind.

By partnering with Kee Safety, you can trust that every aspect of your rooftop safety is meticulously evaluated and enhanced with industry-leading solutions. Our goal is to not only meet but exceed regulatory requirements, ensuring a safer workplace for all.

Contact our qualified Fall Protection Experts to schedule a complimentary rooftop safety assessment.



keesafety.com/safetyaudit
(800) 851-5181

NATIONWIDE EXPERTISE

Kee Safety boasts a nationwide team of 25 safety experts capable of accessing any roof in North America within two days. This rapid response capability ensures that safety issues can be addressed promptly, minimizing risks and disruptions.

Our team's extensive training and certifications in various safety standards make us well-equipped to handle diverse safety challenges across different locations.

**Any Roof.
Anywhere.**

within

2

DAYS



Assessing Risk

In any workplace, understanding and managing risk is crucial to maintaining a safe environment. **The Risk Assessment Matrix** is a powerful tool that helps organizations evaluate potential hazards by analyzing two key factors: the severity of the impact and the likelihood of occurrence. By systematically assessing these elements, the matrix enables safety professionals to prioritize risks and implement effective mitigation strategies. This approach not only helps in identifying critical areas that require immediate attention but also ensures that resources are allocated efficiently to protect workers and maintain compliance with safety standards.

- 1 Severity of Injury:** In fall protection assessment, the severity of a fall-related injury is always assumed to be life-threatening.
- 2 Likelihood:** The greatest predictor for the likelihood of an accident occurring is to review the frequency of exposure to the hazard on the roof.

Risk = Severity X Likelihood: We prioritize our Risk Assessment based on the critical danger and how frequently workers are exposed.

		LIKELIHOOD				
		1 NEAR IMPOSSIBLE	2 UNLIKELY	3 POSSIBLE CHANCE	4 LIKELY	5 ALMOST CERTAIN
POTENTIAL SEVERITY	1 INSIGNIFICANT	1	2	3	4	5
	2 MINOR INJURIES	2	4	6	8	10
	3 NOTABLE INJURIES	3	6	9	12	15
	4 MAJOR INJURIES	4	8	12	16	20
	5 DEBILITATING INJURY DEATH	5	10	15	20	25

Prioritizing Safety

Maximizing Rooftop Safety: A Four-Level Hierarchy of Fall Protection Solution

A truly comprehensive rooftop solution follows the Hierarchy of Fall Protection, the gold-standard of safety procedures. An expert starts by inspecting the roof site for potential fall hazards. From there, a complete system solution and recommendations that descend down the four levels of the hierarchy—from simple, sensible approaches for eliminating risks all the way down to lifesaving personal protection systems.

Collective Systems require no additional training to use. Work Restraint and Fall Arrest Systems both require a high level of user competency, training and additional inspection to be used effectively.



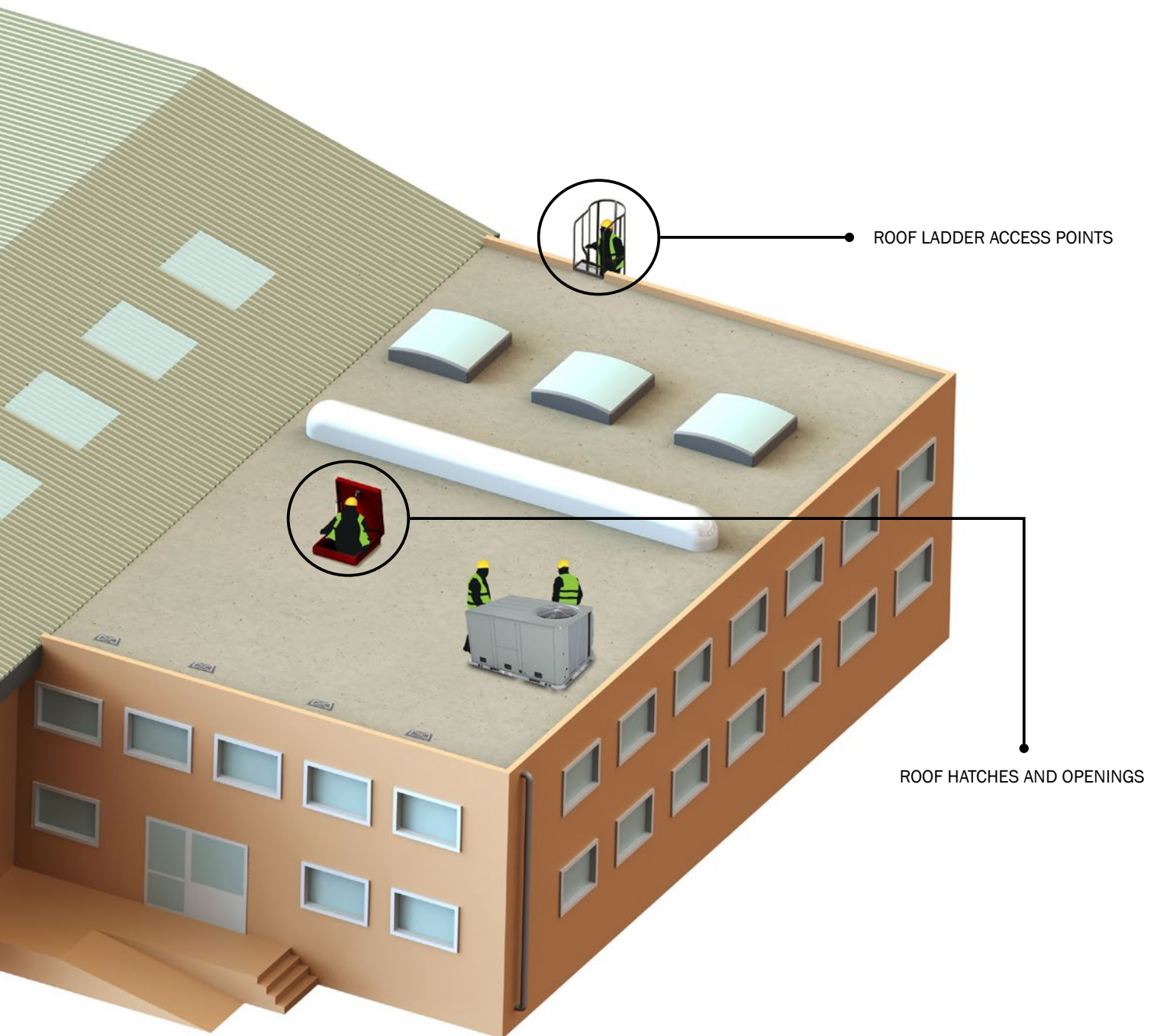
Identifying Danger Zones: Roof Access

Understand how workers get on and off the rooftop

When climbing up onto the rooftop to perform maintenance tasks and when exiting the work zone, there is a high potential to slip or fall. Providing safe egress and ingress for workers is critical.

Access Points

Access points are the most frequented hazard on any roof. Your workers are exposed to this risk twice every time they enter and exit to perform tasks. For example, if your worker is required to access the roof 8 times per year, they are exposed to the access hazard 16 times. All ladders and hatches must be secured with a self-closing gate and safety-compliant railing.



ROOF LADDER ACCESS POINTS

ROOF HATCHES AND OPENINGS

Access Points: Spotting Hazards on the Roof

Each employee is protected from falling into a ladder way, floor hole, or ladder way platform hole by a guardrail system and toe boards erected on all exposed sides, except at the entrance to the hole, where a self-closing gate or an offset must be used*

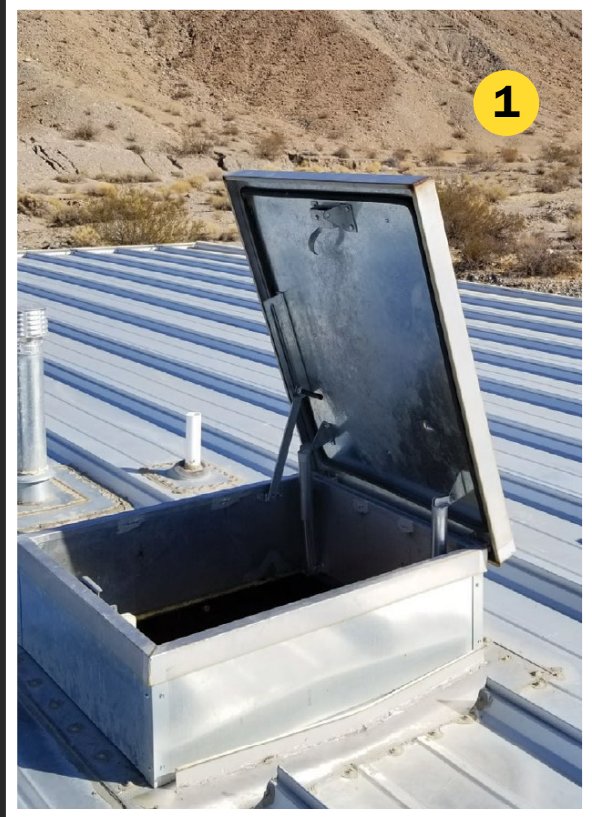
*Chains are no longer permitted for use as a fall protection system on rooftop access points.

1

Unprotected Roof Hatch

Unprotected roof hatches are one of the most common and dangerous fall hazards on commercial roofs. The primary risk is the possibility of falling through the roof opening while the lid is open, which can lead to serious injuries or even fatalities. These hatches are often used for roof access during maintenance or inspections, making the need for a reliable safety solution critical.

The Kee Hatch is specifically designed to address this safety issue by providing a secure solution for safe egress and ingress through the roof hatch while it is open. It ensures that workers can safely access and exit the roof without the risk of falling. Additionally, Kee Hatch can be easily integrated into existing roof structures, offering a straightforward and effective way to enhance safety. This system not only protects workers but also ensures compliance with safety regulations, making it an essential component for any commercial roof setup.



2

Unprotected Fixed Ladders

Unprotected fixed ladders are a common feature on the sides of buildings, serving as essential access points either from roof to ground or between different roof levels. However, they present significant fall hazards, particularly the risk of falling on either side of the ladder or through the ladder opening itself. These hazards can lead to serious injuries or fatalities if not properly addressed.

The Kee Guard Ladder Access Kits are specifically designed to mitigate these risks by providing a permanent guardrail on either side of the fixed ladder. This system enhances safety by ensuring that the sides of the ladder are securely protected, preventing accidental falls. Additionally, the inclusion of a self-closing safety gate adds an extra layer of protection, ensuring that the ladder opening is always securely closed when not in use. This combination of guardrails and self-closing gates offers comprehensive safety for workers, allowing safe and secure access to various building levels while minimizing the risk of falls and related injuries.



OSHA Code: 1910.28(b)(3)(iv)



Kee Hatch: Secure Roof Access

Kee Hatch provides safe and secure access to rooftops while protecting against accidental falls. Designed to integrate with existing roof hatches, it ensures compliance with safety standards and offers peace of mind for maintenance and inspection tasks.

FAQ

Access Points

1

Can I use chains instead of a self-closing gate?

Using a chain as ladder protection is not recommended or compliant with OSHA regulations. Chains cannot close themselves, and relying on someone else to reattach the chain poses safety hazards. Reattaching the chain while descending the ladder puts the worker in a precarious position. A self-closing gate always provides reliable protection, eliminating user error. OSHA mandates the use of guardrails, toeboards, self-closing gates, or offsets at ladderway entrances to prevent falls. Replace chains with compliant gates on ladders and ensure OSHA-compliant equipment. Seek professional assistance for assessments and compliance.

2

When do I need a vertical climbing device on my ladder?

Fixed ladder systems are prevalent in various industries such as cell phone towers, oil platforms, storage silos, water towers, and wind turbines. However, workers climbing these permanently fixed ladders often have a false sense of security. OSHA regulations require the use of a vertical lifeline or a ladder equipped with a cage system for fixed ladders over 24 feet. It is recommended to use vertical lifelines instead of ladder cages as cages do not prevent vertical falls. If a worker slips on a ladder rung with a cage system, they can fall to the ground or collide with the cage, making rescue challenging.



Kee Hatch

Protect your team in and around rooftop hatches

Why do you need Kee Hatch Access Guardrail?

Secure Roof Access

Just a moment of distraction can turn an open roof access hatch into a hazard. It's why OSHA requires roof access points to be protected by a standard railing and gate. Kee Hatch® guardrail and roof hatch door protect your roof access points by surrounding the opening, mitigating the risk.

Safe Transitions

It might not seem it, but transitioning from a ladder through a roof hatch can be a hazardous process. Kee Hatch® mitigates the risk of fall hazards by making the transition safer with a roof hatch railing and self-closing gate that also serves as a grab bar for entering and exiting.

Easy Installation

Kee Hatch® requires no special tools or training to install it and you'll receive step-by-step instructions too. The modular design makes it easy to make any adjustments on site, whilst the system easily integrates with existing openings and ladderways.

Kee Hatch Guardrail Rooftop Opening Protection

Meeting and exceeding OSHA requirements, Kee Hatch® railing protects roof hatches with guardrail and a self-closing gate.

With multiple sizes available, Kee Hatch® integrates with all new or existing roof access hatches. The roof hatch railing protects the opening and becomes a grab rail for climbers, ensuring safer transitions.



Next Level Rooftop Safety

Fully OSHA compliant, Kee Hatch Access Guardrail has been specially designed to for safe egress and ingress through roof hatches. It also gives protection of the roof opening when the hatch is open. It's suitable for all roof hatches and easily integrates with existing openings and ladderways.

Features

- Simple design - durability
- Flexible system to fit any hatch configuration
- Modular construction speeds installation
- Galvanized steel or aluminum finish for corrosion resistance

Easy Integration

- 7 versatile systems available to fit any hatch
- Compliments Gee Guard Roof Edge Protection
- Integrates easily with existing openings and ladderways
- Non-penetrating options available



Kee Guard

Ladder Kit

Non-penetrating Fall Protection Solution

Why do you need Kee Guard Ladder Kit?

Versatile and Easy to Install

There is no welding needed on-site, which means it can be installed with basic tools. Plus the components can be adapted to meet the unique design requirements of non-standard roof applications. Works well with a Kee Safety safety railing. Please learn more about safety guardrail solutions by visiting our complete Kee Guard® solutions page.

Safety Railing Roof Edge Protection

On a flat or low slope roof, a protected perimeter limits access to the leading edge. Installing a modular, free-standing safety railing system that does not penetrate the roof membrane provides a permanent, safe and dependable safety guardrail barrier for the roof edge.

Simple Rooftop Guardrail Solution

Instead of having to re-think each access point. Kee Guard® provides you with a quick way to deploy a workable safety rail solution to a wide variety of rooftop environments.



Kee Guard Ladder Kit for Rooftop Guardrail

Kee Guard® ladder kits are a non-penetrating fall protection solution for a safety railing that is designed to protect workers when using a fixed ladder as they enter and exit the rooftop.

The kit is easy to install with a few simple hand tools, in most cases, no roof penetration is required. All iron fittings are galvanized so the system will last for years without corrosion.





Rooftop Guardrail Protection at a Dangerous Transition

One of the most dangerous points of the roof is the transition point between the roof and the ladder. The Kee Guard® kit provides a layer of fall protection right where it's needed. The guard railing flanks the access point, ensuring a safe approach. Kee Gate® is a self-closing safety gate that ensures that the ladder access point is approached intentionally. The surrounding supports of the safety railing ensures that there is plenty of support when making the transition on and off the roof. Kee Guard offers a comprehensive safety guardrail solution that works well with Kee Guard Ladder Kit. For more safety guardrail solutions, please learn more about Kee Guard®.

Features

- Free-standing roof guardrail provides standard 10 feet on either side of the ladder
- Reversible self-closing gate
- Available as a kit
- Galvanized steel finish
- Simple and quick to install

Benefits

- Forms continual protection from guardrail to the ladder stringer
- Safety Gate option ensures safety around the entire opening
- Corrosion-resistant for long life
- Retro-fit solution for immediate compliance
- Easily clamps to existing ladders/cages

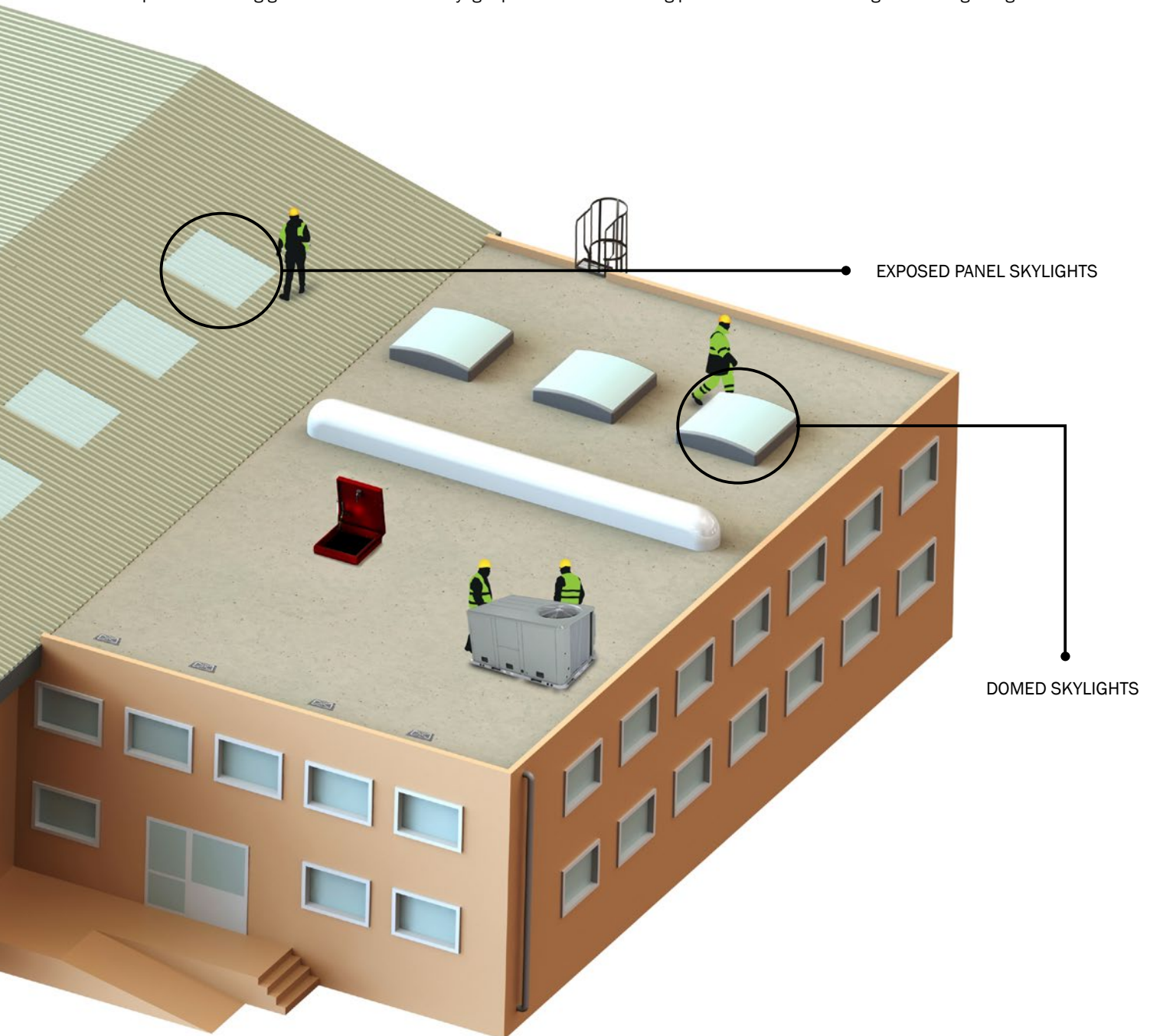
Identifying Danger Zones: Holes in the Roof

Skylights

Skylights present a danger for any individual on the rooftop. OSHA considers skylights to be the equivalent of a hole in the roof. Every skylight opening and roof hole must be guarded by a standard skylight screen or a standard railing on all exposed sides.

Rooftop Openings

Openings are often overlooked, but extremely critical to protect. A worker traversing the middle of the roof has a false sense of security when working far from the roof edge. If workers are carrying equipment, or focused on the job at hand, it is easy to misstep and fall through an opening. Statistically, in the USA, more people fall through skylights than over the edge of the roof, which is why Kee Safety evaluates all rooftop openings as a serious risk concern. Preventing falls through skylights and roof openings is as simple as installing guardrails around the skylight perimeter or attaching protective screen coverings over the glazing.



Rooftop Openings: Spotting Hazards on the Roof

Each employee is protected from falling through any hole (including skylights) that is 4 feet (1.2 m) or more above a lower level by one or more of the following:

- Covers
- Guardrail Systems
- Travel Restraint Systems
- Personal Fall Arrest System

1

Unprotected Dome Skylights

Statistically, you are more likely to fall through the roof than off of it. Dome skylights, which are commonly found on many rooftops, present a significant fall hazard. Over time, these skylights are exposed to UV degradation, making them more prone to breakage and increasing the risk of accidental falls.

The modular Kee Dome system is specifically designed to address this issue by providing a secure barrier around skylights. This system allows contractors and maintenance crews to safely and easily access rooftops for repair and maintenance work without the risk of falling through glazed areas. By installing Kee Dome, you ensure that your rooftop is safer and that workers are protected from one of the most common and dangerous fall hazards. This solution not only enhances safety but also helps in maintaining compliance with safety regulations, making it an essential addition to any rooftop maintenance strategy.

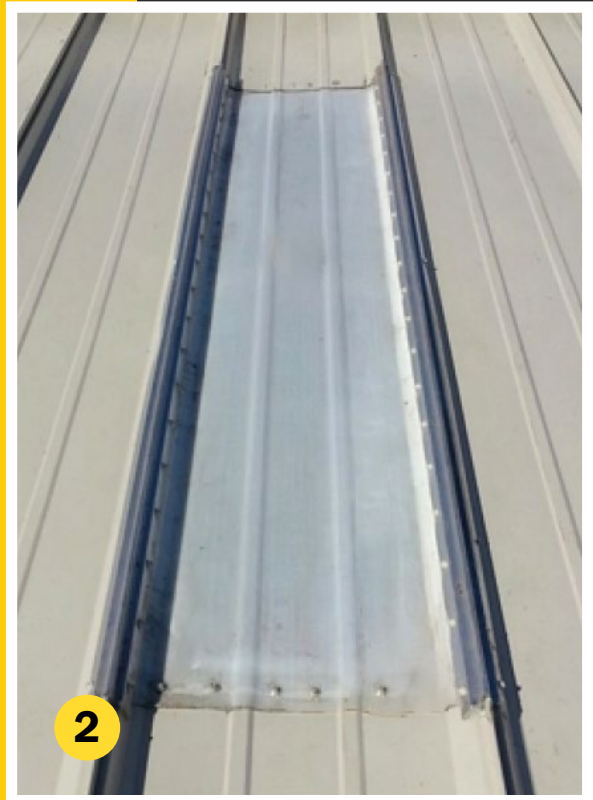
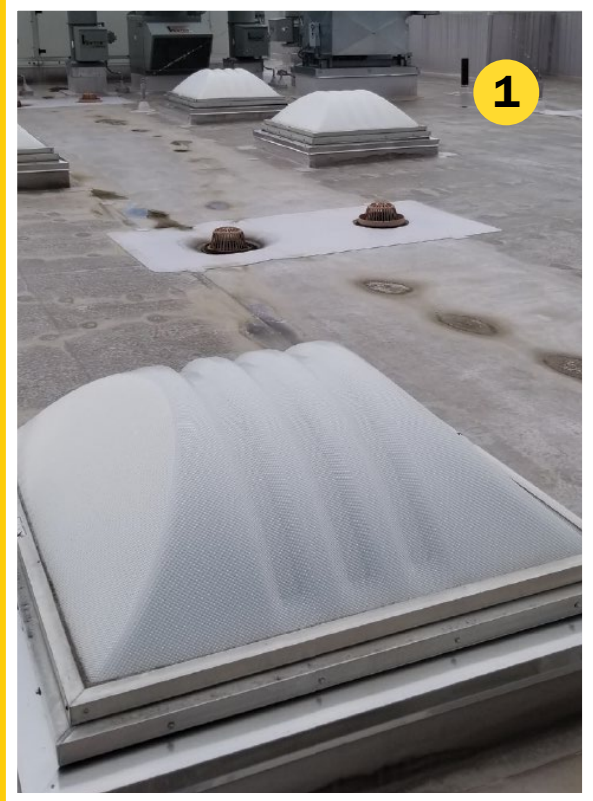
2

Exposed Panel Skylights

Exposed panel skylights found on metal roofs are uniquely dangerous because they are flush with the roof panel and often go unnoticed by workers on the roof. This makes them a significant fall hazard, as workers can easily step on these skylights without realizing the risk, potentially leading to serious injuries or fatalities.

Kee Cover is designed to provide a structural barrier that protects workers from falling through these concealed openings. This robust solution ensures that workers can safely navigate the roof without the risk of stepping on an unprotected skylight. By installing Kee Cover, you create a safer working environment, reducing the risk of falls and ensuring compliance with safety regulations. This system is essential for any rooftop maintenance or repair work, offering peace of mind and enhanced protection for your workforce.

OSHA Code: 1910.28(b)(3)(v)





Keel Cover Skylight Screen: Enhanced Skylight Protection

Keel Cover Skylight Screens provide robust protection by securing skylights and preventing falls through these vulnerable roof openings. Designed to be durable and compliant with safety standards, they ensure a safer environment for rooftop work.

FAQ

Rooftop Openings

1

Is my skylight fall protection rated?

Skylights are typically manufactured out of a polymer or plastic dome. Over time, UV degradation breaks down the strength of that dome, much like plastic deck furniture starts to breakdown in the sunlight over the years. As time passes, the dome becomes brittle, making the falls through skylights one of the top causes of rooftop falls. Many skylights have stickers on the side that state “danger risk of fall” However, if you do not see that warning sticker on the curb of your skylight you are not necessarily safe, it is very likely the sticker may be completely sun-faded.

2

I have bars under my skylight, do I need to protect the dome?

Bars welded under a skylight are typically referred to as “burglar bars” and are designed to keep would-be thieves from breaking the skylight to access the facility and steal the equipment. OSHA requires that all skylight “covers” are required to be able to take twice the intended load, and the bars or wiring under the skylight may not be able to withstand the loadings. Additionally, bars below the dome do not eliminate all hazards associated with a fall. In the event of a fall, the dome will break and potentially cause lacerations on the injured party. Furthermore, debris and biological containments will fall into the people or process below the skylight.

Kee Dome

Skylight Railing

A free-standing skylight fall protection system that will not penetrate your roof's surface

Why do you need Kee Dome Skylight Railing?

Quick Assembly

The Kee Dome® system has standard components which can be assembled around the designated area with maximum speed. These include vertical posts, hand and knee rails with associated 90° corner components, and special recycled PVC feet with clamping rings.

Fully Modular

Although designed as a permanent solution, the Kee Dome® system is fully modular, so it can also be expanded to suit any size skylight. It's one solution for many different sizes. The system is suitable for use on all roof surfaces, with a maximum pitch of 3°.

Fully Compliant

Kee Dome® uses industry-leading Kee Klamp® components that are galvanized, making the system long-lasting and virtually maintenance-free. Kee Dome® has also been independently tested to OSHA 1910.29(b)(3).

Skylight Barrier System

This system protects the skylight with a non-penetrating railing without damaging or puncturing the roof.

Kee Dome creates a barrier around the skylight to prevent workers from contacting the skylight. This system protects the skylight with a non-penetrating railing without damaging or puncturing the roof.





Don't leave holes in your safety procedures

Kee Dome® is a modular system designed specifically to prevent falls through skylights, roof lights and dome lights. The modular Kee Dome system allows contractors and maintenance crews to access rooftops for repair and maintenance work safely and easily without the risk of falling through glazed areas.

Skylight Fall Protection

- Constructed of rigid galvanized pipe
- Kee Dome does not block light
- Simple Customization

Configuration

- Includes upright posts, horizontal rails, and specialized corner connectors
- Bases made of recycled PVC.
- Upright posts lock into position within the base using clamping rings
- Exceeds OSHA requirements
- Completely free-standing
- No damage to the roof membrane

Installation

- Can fit any size skylight
- Installs easily using standard tools
- Kee Dome can be adapted to inclined roofs up to 5 degrees.
- When installing Kee Dome, all set screws should be tightened to 29 lbs/ft.



Kee Cover

Skylight Screens

Adaptable cover for skylights on flat, trapezoidal and standing seam roofs.

Why do you need Kee Cover Skylight Screens?

Four Formats

Kee Cover is available in four formats for different types of skylights. Flat screens are available to cover roof lights on corrugated roofs. For domed skylights, there are both penetrating and non-penetrating options. Long screens are available for standing seam roofs with integrated skylights.

Smart Design

Our fall protection skylight screen offering has been designed to protect people and preserve your roof. Non-penetrating options are available in most roof types. The design helps prevent leaks.

OSHA Compliance

Kee Cover Skylight Screens have been designed to exceed the standards of OSHA 1910.29(e)(1). In addition to this, Kee Cover can be ordered to meet the Cal-OSHA requirements.



Light up your safety procedures

Kee Cover has been specifically designed to provide an effective solution for covering unprotected roof lights without blocking out the light they are supposed to let into a building.

All components and mesh panels are hot-dip galvanized or stainless steel for enhanced durability. Each screen can usually be installed in a matter of minutes. Speed on-site keeps costs down.





The Most Dangerous Hazard on the Rooftop

Many people incorrectly assume that the most dangerous fall hazard is the edge of the roof. While very dangerous, people instinctively know to stay away from the edge. Skylights are more dangerous because they are often in the walking path of the people on the roof and many do not see them as a danger.

Many skylights are fragile and could not support the weight of a falling person. Many fatalities happen when people fall THROUGH the roof, not necessarily over the edge.

Kee® Skylight Screens

Perfect for Curb Style skylight installations, Standing Seam metal roof skylights, and for Rib/Corrugated metal roof skylights. Complies to all OSHA standards for skylight fall protection. Available in galvanized or stainless steel, in a standard 4" x 4" grid.



Non-Penetrating Curb Style Screen: Model STS

- Screen attaches to the outer frame
- No risk of leaking
- Minimum 12" wide x 12" Long
- Maximum 70" wide x 120" Long



Metal Corrugated: Model SCS

- Clamps directly to the metal rib
- Uses two support channels centered on the skylight for secure installation
- Fully customizable to fit your skylight
- 40" x 128" Flat



Standing Seam Screen: Model SSS

- Clamps to the standing seam
- No penetration of roof or skylight
- Clamps to the standing seam
- 24" x 128" Long

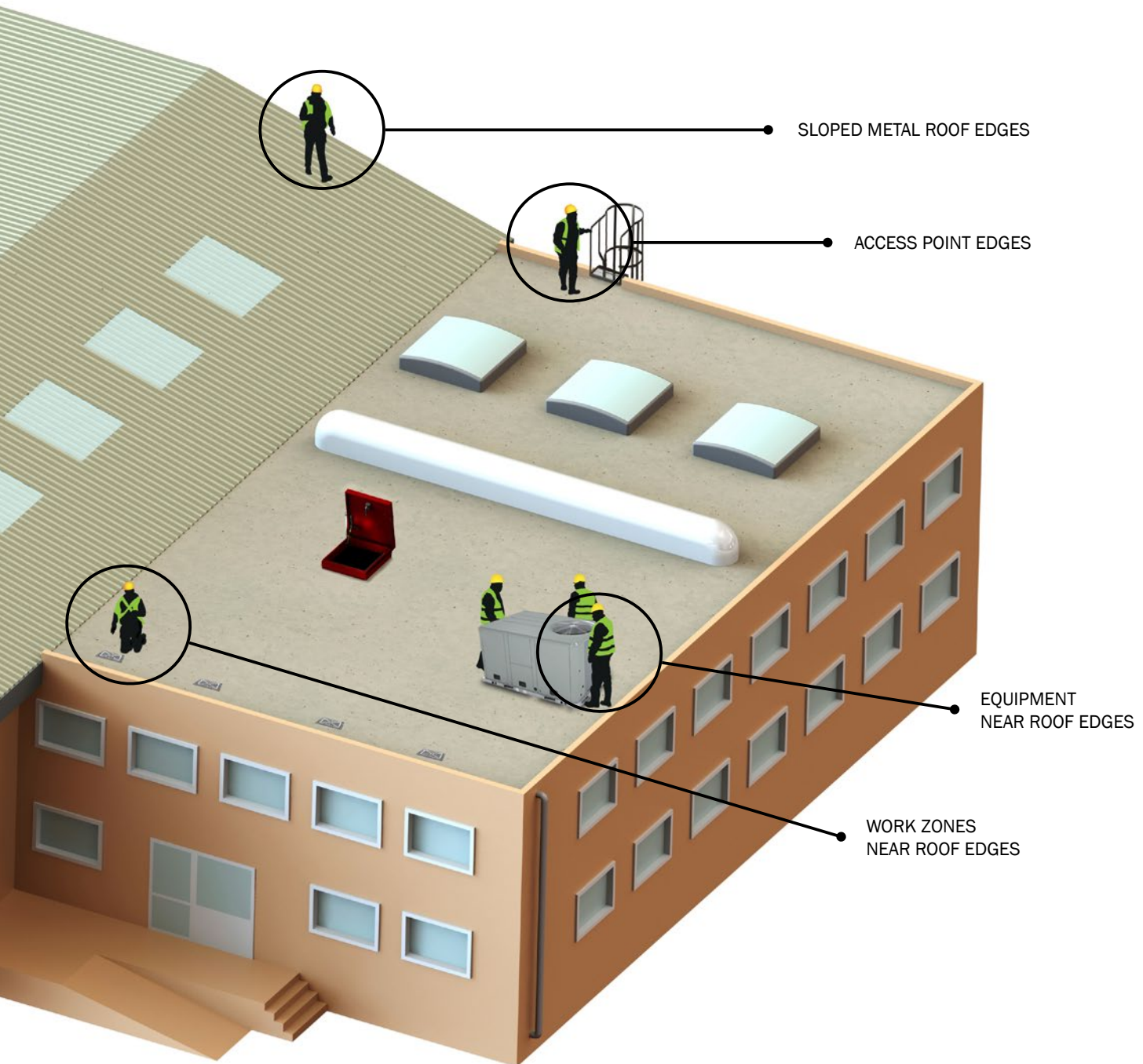
Identifying Danger Zones: Roof Edges

Protecting the Perimeter

When access to the entire roof is authorized, the safest, most comprehensive solution is a perimeter railing system that surrounds and protects all roof edges.

Unprotected Edges

The edge of the roof is the most visible hazard, and typically the hazard most people want to protect first. Proximity to the roof edge is a significant factor in identifying the probability of an accident occurring. OSHA Code states that if a worker can be exposed to a fall, then they must be protected. Frequently, a worker's purpose for accessing the roof is to service a piece of equipment. Is the equipment too close to an unprotected edge on your roof?



Roof Edges: Spotting Hazards on the Roof

Use Multiple Solutions to Secure the Perimeter

Every rooftop is unique, presenting its own set of challenges and hazards. To ensure comprehensive safety, it is crucial to use a combination of solutions tailored to the specific needs of your rooftop. Implementing a hybrid guardrail system is an effective way to protect workers from both frequent and infrequent hazards that they may encounter.

By integrating various safety measures, such as guardrails, safety gates, and fall protection systems, you can create a robust safety perimeter that addresses all potential risks. This approach not only enhances the overall safety of the work environment but also ensures compliance with OSHA regulations, providing peace of mind for both employers and employees.

A well-designed hybrid guardrail system offers flexibility and adaptability, making it suitable for diverse rooftop configurations and conditions. It allows for the protection of high-traffic areas as well as less frequently accessed sections, ensuring that every part of the rooftop is secure. By using multiple solutions to secure the perimeter, you demonstrate a strong commitment to workplace safety and the well-being of your workforce.

1 Zone Defense: Unprotected Edges

When work is performed less than 6 feet (1.8 m) from the roof edge, OSHA allows for employers to protect its people by using a guardrail system, safety net system, travel restraint system, or personal fall arrest system.

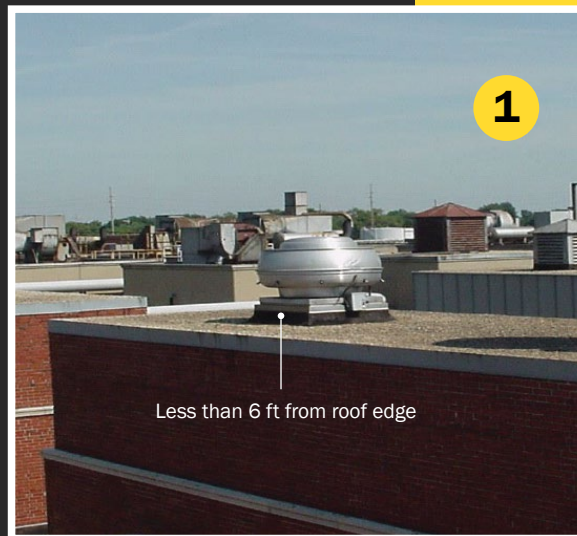
2

When work is performed at least 6 feet (1.8 m) but less than 15 feet (4.6 m) from the roof edge, OSHA allows a guardrail system, safety net system, travel restraint system, or personal fall arrest system. The employer may use a designated area when performing work that is both infrequent and temporary.

3

When work is performed 15 feet (4.6 m) or more from the roof edge, the employer must: protect each employee from falling by a guardrail system, safety net system, travel restraint system, or personal fall arrest system or a designated area.

OSHA Code: 1910.28(b)(13)





Kee Guard: Reliable Edge Protection

Kee Guard Top Fix offers secure, non-penetrative edge protection for roofs, ensuring worker safety and preventing falls. Designed to be easily installed on various roof types, it complies with safety standards and provides a durable solution for maintaining a safe working environment.

FAQ

Unprotected Edges

1

How does OSHA define temporary or infrequent rooftop access?

Infrequent access: The work must involve occasional or sporadic access to the surface rather than regular or routine access. Infrequent access is typically in response to a breakdown. Federal OSHA has cited access more than once per month as frequent, but safety experts tend to agree with CAL-OSHA that infrequent should be once per quarter or less. This will limit the number of hits through the access point to below 8 per year.

Temporary work: The work must be of short duration, typically lasting no longer than a “an hour or 2” according to Federal OSHA. The key with temporary work is that the task is simple and can be done in a single trip to the work area, no diagnostic or assessment process and then return with the tools required to complete the work. This reduces exposure to the access point hazards and leading edge hazards by half.

2

Can I use a painted line as a “Designated Area?”

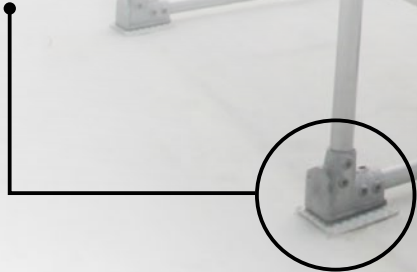
Simply put: No. OSHA safety guidelines do not permit the use of painted lines for “Designated Areas.” Instead, OSHA requires a physical barrier between the worker and the leading edge. This decision was made after careful consideration, prioritizing worker safety and the visibility of warning lines at a height between 34 to 39 inches. This height ensures effective warning for workers approaching designated areas, even when equipment or objects are nearby, minimizing potential hazards and promoting a secure work environment. The primary issue with painted lines is that they disappear when covered with snow, dust, or debris.

Kee Guard

Rooftop Guardrail and Safety Rail Solution

Counterbalance: The Physics of Cantilever Design

Modular and durable, our component-based solution uses counter-weight engineering. The simple cantilever principle provides unrivaled strength and safety. The heavy-duty Kee Guard bases are manufactured using molded, 100% recycled PVC. Each 30 pound base is positioned at specific intervals to create a stable, protective barrier on the rooftop.



Why do you need Kee Guard Safety Guardrail?

Highly Versatile Rooftop Fall Protection

Offers the best stability for all standard rooftop fall protection systems including membrane, metal profile, and standing seam roofs. It's also very flexible and can be used on everything from complex roof shapes to those that change in elevation. Rooftop guardrail protection from Kee Guard separates your people from hazards.

Easy to install

To assemble Kee Guard, you will need a torque wrench or hex key, making it incredibly easy to install. Once in place, it is a safe, versatile system that delivers reliable leading edge rooftop fall protection.

Longevity is the Standard

The hot-dipped, galvanized finish is corrosion-resistant and requires little-to-no maintenance for safe, dependable, and trouble-free rooftop guardrail edge protection. Kee Guard safety railing offers long-term rooftop fall protection solutions.

Cantilever design

Kee Guard is built using counter-weight engineering. Its simple cantilever design provides superior strength and safety in even the harshest of environments. In addition, the heavy-duty bases are manufactured using eco-conscious, recycled PVC.

Kee Guard Safety Rail

A permanent, free-standing roof edge safety rail system, Kee Guard provides robust fall protection without penetrating the roof membrane, preserving the integrity of your building. This eco-conscious design minimizes roof damage, reducing the need for repairs and extending the roof's lifespan. Suitable for various roof types, whether a parapet is present or the rooftop is entirely open, Kee Guard can be retrofitted to older buildings or installed on new constructions.

Engineered with sustainability in mind, Kee Guard systems are crafted from durable, recyclable materials, ensuring long-lasting performance while minimizing environmental impact. Fully compliant with OSHA 1910.29(b)(3) standards, Kee Guard meets top rail height and strength requirements, offering maximum worker protection and peace of mind.



Kee Guard Safety Railing



Kee Guard Top Fix provides secure fall protection for both metal profile and standing seam roofs, offering reliable solutions tailored to your roof type.

Kee Guard Top Fix



Kee Guard Contractor

Kee Guard®: The Most Trusted Name in Safety Railing

On a flat or low slope roof, a protected perimeter limits access to the leading edge. Installing a modular, free-standing railing system that does not penetrate the roof membrane provides a permanent, safe and dependable barrier for the roof edge. Kee Guard railing systems are OSHA compliant and third-party tested

Kee Guard® TopFix: Roof Edge Protection for Metal Roofs

- Kee Guard® TopFix provides a smart solution for metal profile and standing seam roofs
- Perfect for metal roofs up to a 45 degree pitch
- Available in hot dipped galvanized steel or aluminum finishes
- Corrosion resistant, minimum maintenance
- Exceeds OSHA standards for safety

Kee Guard® Contractor: Portable Roof Edge Fall Protection

On a flat or low slope roof, a protected perimeter limits access to the leading edge. Installing a modular, free-standing railing system that does not penetrate the roof membrane provides a permanent, safe and dependable barrier for the roof edge. Kee Guard railing systems are OSHA compliant and third-party tested for reliability.

Features

- Modular component system for multiple configurations
- Adaptable to varying angles and radius edges
- Accommodates ladders, equipment and rooftop obstructions
- Simple counterbalance construction made from 100% recycled PVC
- Durable galvanized finish is corrosion resistant
- Available in a full range of powder coated RAL colors

Benefits

- Non-penetrating solution - roof membrane will not leak
- Passive barrier that protects all personnel; no training required
- Integrates easily with your current fall protection products
- Lower installation cost than fabricated pipe
- No rooftop parapet required

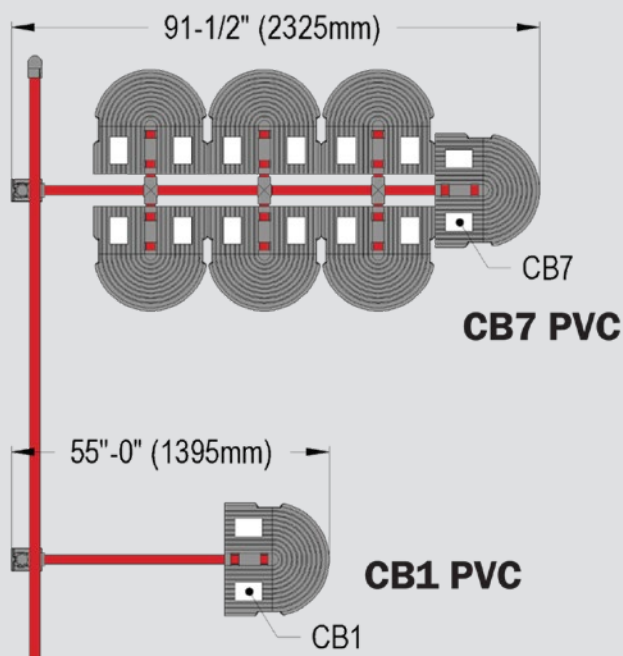
Installing Kee Guard

- Kee Guard Roof Edge Fall Protection System includes pipe railings, uprights, bases, counterweights and fittings
- No specialized labor or work permits, no welding
- Tools required: torque wrench or hex key

Kee Guard

Flexible Safety Solutions for Any Scenario

Kee Safety's fall protection systems, including Kee Guard, are engineered to adapt to any rooftop challenge. Whether dealing with space constraints, on-site obstructions like pipes or columns, or the need for wall-mounted solutions, Kee Guard's modular design ensures that safety is never compromised. Our systems can be customized to meet the specific needs of your rooftop, providing reliable protection in even the most complex environments.



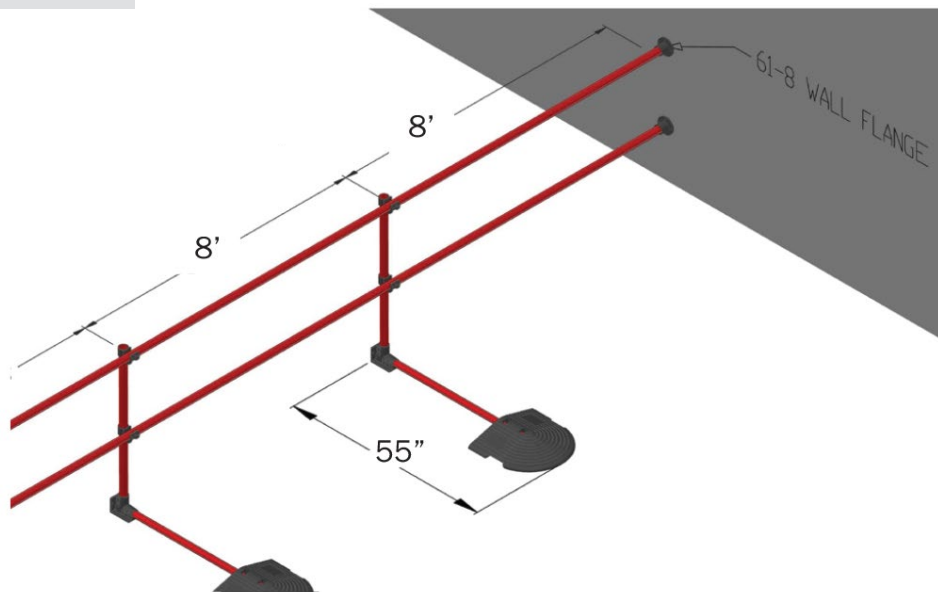
Optimizing Rooftop Space with Custom Configurations

When planning rooftop safety solutions, it's essential to account for the available space and specific site conditions. Kee Guard offers customized counterbalanced lengths to address various space constraints on rooftops. The CB7 PVC (91-1/2") provides robust protection for larger areas, while the more compact CB1 PVC (55") is ideal for spaces where room is limited. By offering different CB configurations, Kee Guard ensures that your fall protection system can be tailored to fit the unique dimensions and requirements of your rooftop, delivering effective safety without compromising on space.

Additionally, the versatility of Kee Guard's modular design allows for seamless integration with existing rooftop features, such as HVAC units, skylights, and other obstructions. This adaptability ensures that no matter the complexity of your rooftop, Kee Guard can be configured to provide optimal protection. With the ability to customize not only the length but also the placement of components, Kee Guard offers a flexible solution that meets both safety standards and the practical needs of your specific environment.

Wall-Mounted Flexibility for Space Constraints

In situations where rooftop space is limited, the Kee Guard system offers flexible installation options. As illustrated, the system can be securely fixed directly to a wall using a 61-8 Wall Flange, eliminating the need for additional counterbalance weights. This wall-mounted configuration not only maximizes available space but also provides robust protection without compromising safety standards. It's an ideal solution for rooftops where every inch of space matters.





Keel Guard: Adapting to On-Site Obstructions

Keel Guard is designed to be highly adaptable, making it the ideal solution for complex rooftops with various obstructions. As shown in the image, Keel Guard can be seamlessly installed around pipes, columns, and other on-site obstacles without compromising safety or stability. Its modular design ensures that no matter the rooftop scenario, Keel Guard can accommodate the specific needs of the site, providing comprehensive fall protection in even the most challenging environments.

Wind Load Calculations for Kee Guard Effectiveness

The Wind Load Calculator is an essential tool used to evaluate the performance of Kee Guard systems in various wind conditions. By analyzing factors such as basic wind velocity, exposure, and structural characteristics, this tool ensures that Kee Guard installations are tailored to withstand the specific wind loads of your location. Whether you're in a high-risk wind-borne debris region or a less exposed area, our calculator helps determine the most effective configuration for maximum safety and compliance. This level of precision ensures that Kee Guard systems remain reliable and secure, even in the most challenging environments.

WIND LOAD CALCULATIONS

Risk Category 1 - 140 mph
Risk Category 2 - 150 mph
Risk Category 3 - 170 mph

San Juan is in a wind-borne debris region.

San Juan is in a high-wind area.

San Juan is in a high-wind area.

San Juan is in a high-wind area.

Fundamental value of the basic wind velocity		V_{b1}	= 100.000 mph
Sensational factor	C_{s1}	= 1.00	
Probability factor	C_{p1}	= 1.00	
Directional factor	C_{d1}	= 1.00	
Topography factor	C_{t1}	= 1.00	
Exposure factor	C_e	= 2.39	
Peak velocity pressure	q	= 157.222 lb/ft ²	

Resisting moment due to self weight			
Maximum bay length	X	= 9.50 ft	
Number of intermediate weights	N	= 2	
Resisting moment due to intermediate weights	M_1	= 361.100 lb-ft	
Resisting moment from end 1	M_2	= 1576.504 lb-ft	
Resisting moment from end 2	M_3	= 737.205 lb-ft	
Total resisting moment	M_R	= 3074.809 lb-ft	

Overturning moment due to wind			
Structural factor	C_{f1}	= 9.50 ft	
Force coefficient for a cylindrical tube	G	= 1.2	
Tube diameter	D	= 1.20 ft	
Wind load on the tube	F	= 27.525 lb/ft	
Overturning moment due to wind on a vertical leg	M_4	= 166.560 lb-ft	
Overturning moment due to wind on all vertical legs	M_5	= 674.550 lb-ft	
Overturning moment due to wind on all panels	M_6	= 2021.590 lb-ft	
Total overturning moment due to wind	M_O	= 2976.704 lb-ft	

*Customer is only Building Risk Category 2. Risk Category 2 requires Changing risk category will change design and install material price.

33

Kee Line

Horizontal Lifeline

Energy absorbing lifeline system suitable for use on roofs, ceilings and other structures.

Why do you need Kee Line?

Enhanced Worker Safety

Kee Line Horizontal Lifeline provides continuous, reliable fall protection for workers at heights, reducing the risk of falls and injuries. Investing in Kee Line prioritizes the safety and well-being of your workforce, ensuring a safe and productive work environment.

Compliance with Safety Regulations

Kee Line is designed to comply with OSHA 29 CFR 1910.140, 1926.502 & ANSI Z359, helping your workplace meet legal standards and avoid costly penalties. Implementing this system shows your commitment to safety laws, protecting your business from legal issues and enhancing your reputation.

Versatile and Cost-Effective Solution

Kee Line offers a versatile safety solution adaptable to various environments, from rooftops to walkways. Its durable construction ensures long-term reliability, making it a cost-effective investment in workplace safety, delivering both protection and value.

Elevating Safety and Efficiency for your Projects

The Kee Line® Horizontal Lifeline system is a reliable solution for fall protection, ensuring a secure working environment on various roof types. Emphasizing safety and compliance, it integrates seamlessly into safety protocols. Additionally, it enhances operational efficiency by facilitating safe movement across rooftops, boosting productivity while maintaining top safety standards.

Reliable Performance

- Rigorously tested on as-built roofs
- Endorsed by 3rd-party safety validation
- OSHA compliant engineering

Easy Integration

- Engineered for multiple roof types
- Can be utilized by up to three users at any one time

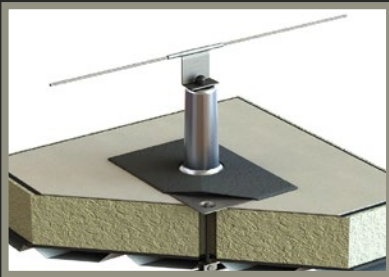
Cost Effective

- Components are corrosion-resistant for low maintenance
- Can be mounted directly to concrete, steel, brick or stonework
- Fast, easy installation



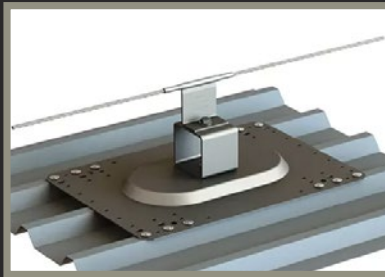


The Engineered Horizontal Lifeline



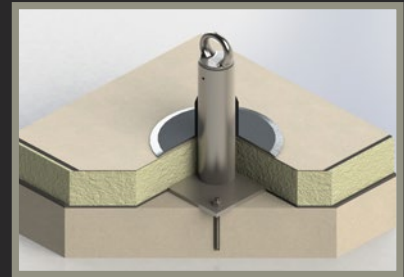
Membrane Roofs

Keel Line® provides one of the only upright posts that can be weathered with a standard pipe detail.



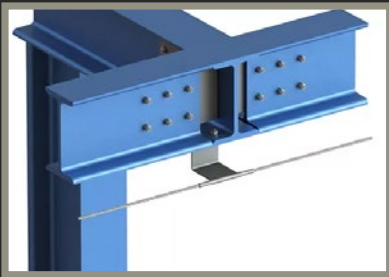
Metal Sheet Roofs

Utilizing the same range of brackets as standard roof systems, Keel Line® can be installed quickly and easily on standing seam roofs.



Structural Roofs

Keel Line® structural posts can tie directly to the building frame. These heavy-duty anchors can be welded, wrapped, clamped to beams, or mounted to concrete.



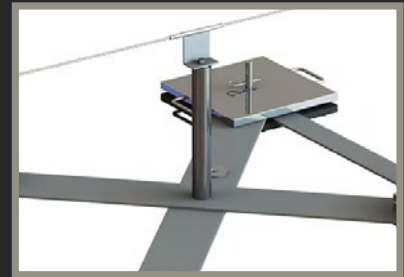
Overhead

Provides protection for up to two users. The lifeline system mounts directly above for tasks like crane access, vehicle loading, maintenance, and cleaning.



Structures

Keel Line® for Structures allows horizontal lifeline mounting directly to concrete, steel, brick, or stonework, either horizontally or overhead.



Non-Penetrating

Keel Anchor creates a permanent rooftop lifeline without penetrating the roof. Each wire post connects to a weighted structure, ensuring user security in case of a fall.



Keel Line® Configurator

Keel Safety provides software validation to all Keel Line designs. Each design calculates building loads, vertical line stretch and other critical measurements to ensure that the fall protection systems you receive will perform as expected and keep your team safe.



Kee Anchor

Make working at height much safer with this mobile man anchor system

Benefits of Kee Anchor Mobile Tie-off Point

Highly Versatile

Kee Anchor can be used on inclined roofs as well as flat roofs. It can also be used on industrial steel clad pitched roofs when positioned opposite to where the work takes place. This should be used when the roof has a pitch greater than 5°, up to 15°.

Additional Friction

Rubber-coated base weights are supplied with suction cups which applies additional friction to the roof membrane, further reducing any movement during a fall arrest event. There are also over 100 suction cups molded to each rubber bonded weight to maximize grip.

Fall Restraint

Kee Safety recommends that whenever possible, Kee Anchor is used in “Fall Restraint.” This feature restricts anyone from getting close to the edge of the building and consequently, it is not possible for a fall to occur.

Kee Anchor Tie-off Point

Engineered for all roof types including pitched metal profile and standing seam roofs up to a 35° slope.

It's simply installed with hand tools so there's no need to buy additional equipment. Can be used in conjunction with other products to provide a complete fall protection plan.



Stay anchored to safety

Kee Anchor is a mobile, dead-weight anchor device for use on roofs up to 5 degrees pitch, where the installation of collective protection or permanent anchor devices is not viable. Kee Anchor uses a central pedestal which allows the attachment of a safety harness and lanyard and raises the height at which the arrest force is applied.

Features

- Fall restraint for up to 2 workers
- Restraint option must ensure that it is not possible for user to approach within 20 inches of a roof edge or other opening
- Rubber-molded bases are engineered to maximize grip
- Corrosion-free: galvanized to BS EN ISO 1461 standards
- Raised central pedestal reduces distance of travel during a fall arrest event

Versatility

- For use on roofs up to 5-degree pitch
- Non-penetrating, portable solution
- Modular deadweight system is easy to install
- Safe solution in wet or dry conditions
- Suitable for multiple roof types



Kee Post

Permanent Roof Anchor

Make working at a height much safer with Kee Post Tie-off points

Why do you need Kee Post?

Diverse Application

Kee Post range is very versatile and therefore has a variety of applications. These include suspended platforms, window washing operations, equipment tie-back, fall protection and horizontal lifelines. This means you can adapt the Kee Post to your site.

Multiple Roof Types

Kee Post works on multiple roof types. These include flat or low-slope roofs, BUR membrane system, single-ply membrane, modified bitumen, green roofs and metal roofs with underlying structures of steel, concrete or wood.

Multiple Connection Types

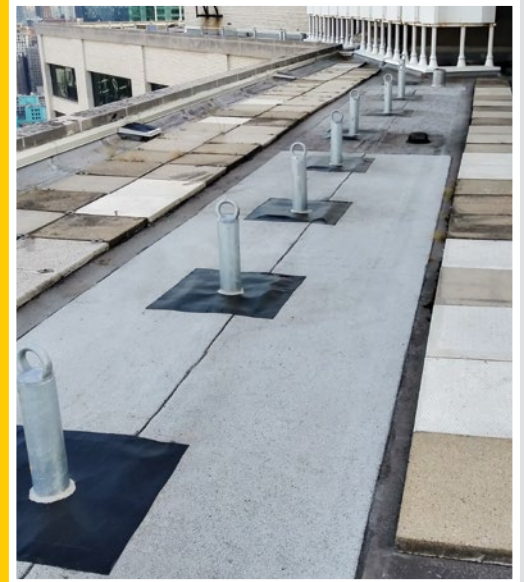
Kee Post was designed to be attached to the underlying roof structure using several methods. Connections are available for bolting on, bolting around, casting in place, epoxy in place, and welding on.

Stay grounded when working at height

The Kee Post Tie-off point acts as a roof anchor for the personal protection of workers carrying out roof-level maintenance operations. Tie-off points are designed for use on roofs where there are no permanent guardrails or other anchor devices.

Benefits

- For use on low and high pitched roofs.
- Fully insulated posts prevent thermal bridge and condensation from forming inside, reducing the possibility of corrosion and enhancing product longevity.
- Provides an anchoring system designed to resist a force of 5000 lb without fracture and/or pull out when applied in any direction.
- Stocked items available on short lead times to meet urgent customer requirements
- Galvanized finish to ASTM A123 to deliver enhanced durability.
- Custom design available for non-standard applications.



A VARIETY OF APPLICATIONS



Tieback anchor

These anchors provide a secure attachment point for window washing and façade maintenance equipment.



Single point anchor

Single point anchors allow one user to safely tie off with the use of a lanyard or retractable fall protection device.



Lifeline anchor

Connect Kee Line horizontal lifeline to provide continuous safety with productivity and mobility.

ANCHOR POST OPTIONS

COMPLIANCE

Kee Safety Anchor Posts are built to meet and exceed SAFE, OSHA 1910.66, OSHA1910.140, CAL/OSHA TITLE 8, SECTION 3291, ANSWI/IWCA I-14.1, ANSI Z359.18 standards. These certifications ensure our anchor posts provide reliable, compliant fall protection across diverse regions and industries, meeting all necessary safety requirements.

HEIGHT



18"



24"

Kee Safety Anchor Posts are available in two height options: 18" and 24". These varying heights allow for flexible installation based on the specific needs of your rooftop or work environment. Whether you require a lower profile for minimal visual impact or a taller post for increased clearance, Kee Safety offers the right solution to ensure optimal safety and functionality in any setting.

BASE FIX

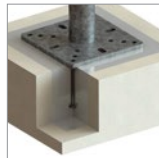
Kee Safety Anchor Posts offer versatile base fix options to accommodate various installation requirements and surface types. Whether you need a solution for concrete, steel, or other materials, our range of base fixes ensures a secure and stable installation. Each option is designed to provide optimal performance, adapting to the specific needs of your project while maintaining the highest standards of safety and durability.



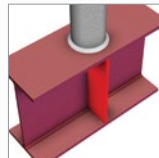
Epoxy



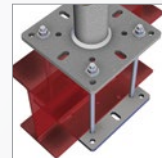
Shallow Deck



Cast-in



Weld on



Wrap Around



BeamClamp



Bolted



Screw in

Kee Mark

Warning Line

A free-standing demarcation system designed to provide administrative separation from hazards.

Why do you need Kee Mark Warning Line?

Versatile System

It's compact, portable and features a unique post design which prevents the chain from becoming detached during adverse weather conditions. Kee Mark's base foot is formed from recycled PVC and weighs 55lbs which supports the system. It is further enhanced by a high visibility, two color polyurethane or steel chain which is continually linked between the support posts..

Easy Installation

Installation of the system is quick and easy with the support posts set up to 20ft apart and the cable linked to form a continuous demarcation route from the point of roof entry to the point of exit. It can be used in place of edge protection solutions, providing the demarcation is set at least 15ft from the roof edge. The system can also be used at ground level.

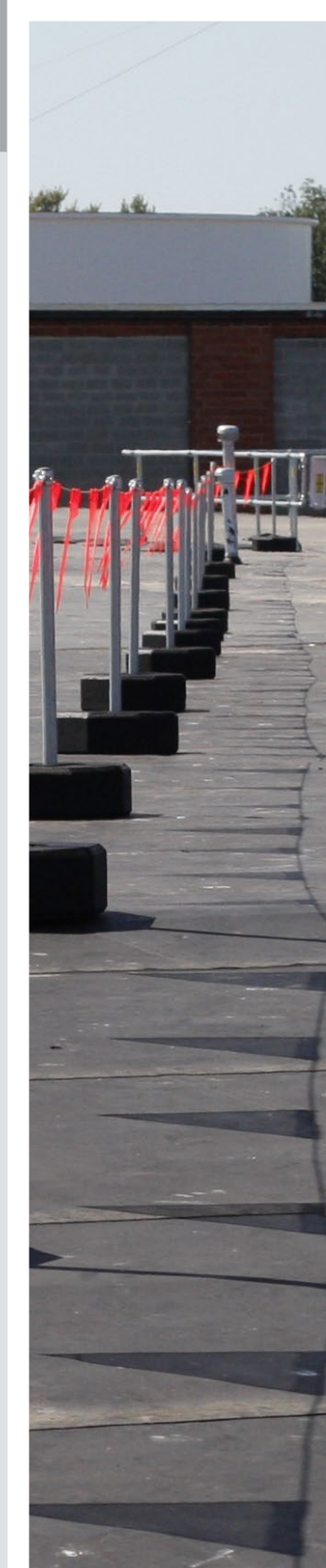
A Safer Solution

The simple modular design incorporates durable galvanized Kee Klamp components and galvanized uprights that stay in place with a hidden set screw. This non-fall arrest system meets the OSHA 1910.29(d) requirements for designated areas for work where demarcation systems should be immediately obvious.



Make your Mark

Kee Mark is a sturdy, durable, and cost-effective warning line for marking perimeters indoors and out. The simple modular design incorporates durable galvanized Kee Klamp® components and galvanized uprights that stay in place with a hidden set screw.





A Great Partner to Kee Guard Roof Railing

Whole roof safety is accomplished through a combination of solutions. Kee Mark Warning Line is designed to protect walk-paths and work areas at least 6' away from the edge of the roof. To protect work being done closer to the edge our Kee Guard Roof Railing is a great solution. For expert assistance on designing a whole roof safety solution please contact us to have one of our experts walk your roof and assist in designing the best safety solution for your roof.

Features

- **Highly Visible:** Bright, high-contrast lines for clear visibility.
- **Durable Materials:** Made from weather-resistant materials for long-lasting use.
- **Easy Installation:** Simple setup with minimal tools required.
- **Adjustable Heights:** Customizable height options to suit various needs.
- **Portable Design:** Lightweight and easy to reposition as needed.
- **Compliance Ready:** Meets OSHA standards for warning line systems.

Benefits

- **Enhanced Safety:** Clearly marks hazardous areas, reducing the risk of falls.
- **Cost-Effective:** Durable design ensures long-term use, minimizing replacement costs.
- **Flexible Use:** Suitable for various applications across different environments.
- **Quick Deployment:** Fast and easy to set up, saving time on site.
- **Regulatory Compliance:** Helps ensure adherence to safety regulations, avoiding fines and penalties.
- **Improved Awareness:** Increases worker awareness of dangerous zones, promoting a safer work environment.

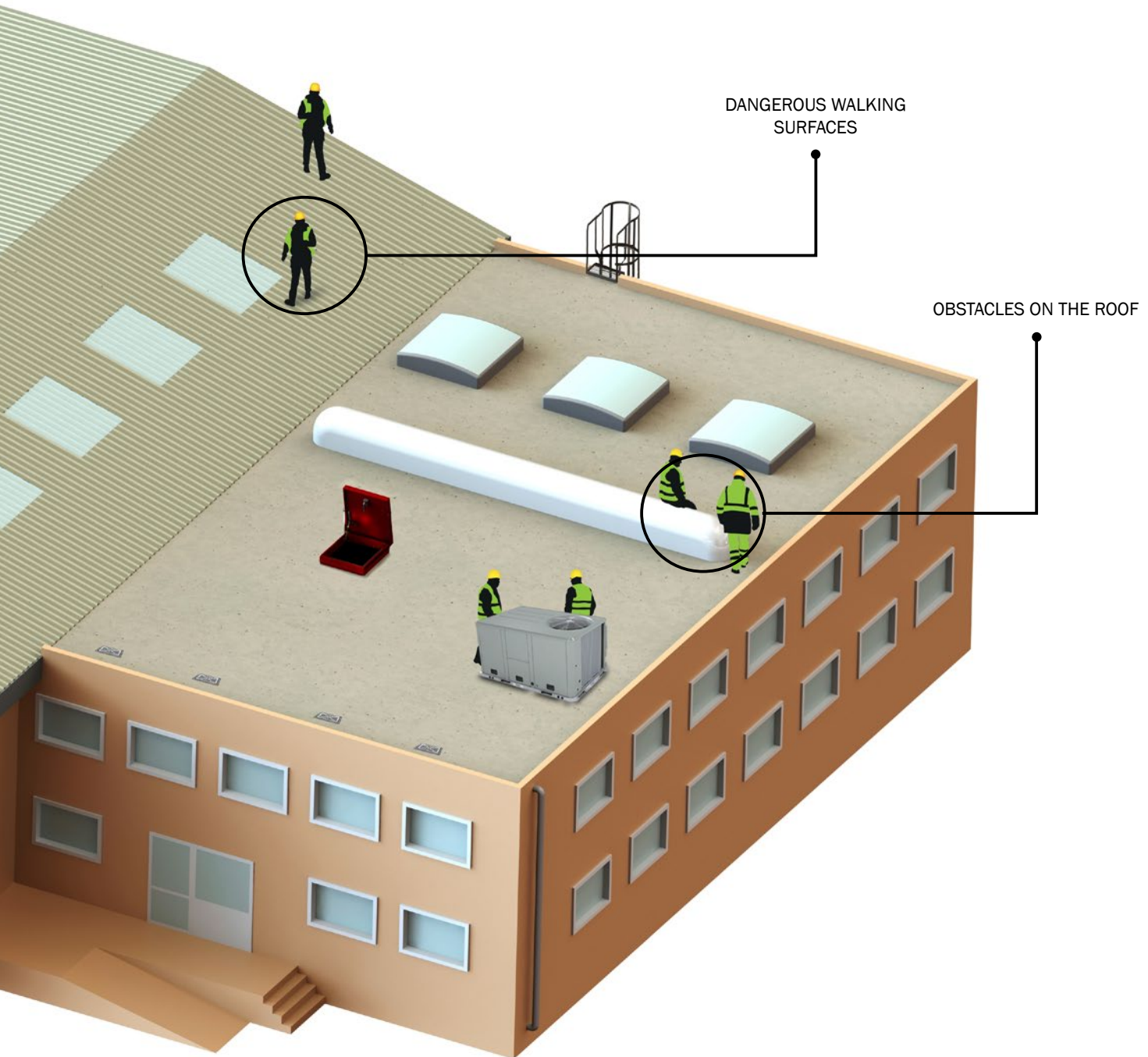
Identifying Danger Zones: Obstacles and Dangerous Walking Surfaces

Obstacles on the Rooftop Hinder Access to Work Zones

Rooftop safety includes providing a safe and efficient path across the rooftop to reach drains, HVAC units or other equipment that requires maintenance. Hazards include obstructed routes and changes in roof level where slips, trips and falls are likely.

Rooftop Obstacles And Dangerous Walking Surfaces

Understanding the path your workers take across the roof is necessary for a complete fall protection assessment. Obstacles on the roof force workers to unsafely climb over or step around the obstruction, often placing workers at risk by walking too close to the roof edge. If you would not allow a trip and fall hazard inside your facility, why allow one on your rooftop?



Safe Access Over Obstructions: Spotting Hazards on the Roof

Each employer must furnish to each of its employees a workplace that is free from recognized hazards that are causing or likely to cause death or serious physical harm.

According to a 2018 US Department of Labor report:

- Slips, trips & falls make up majority of general industry accidents.
- 15% of all accidental deaths are the result of slips, trips and falls.
- They are the 2nd leading cause of death at 12,000 per year.

1 Pipe work and other Low Roof Obstacles

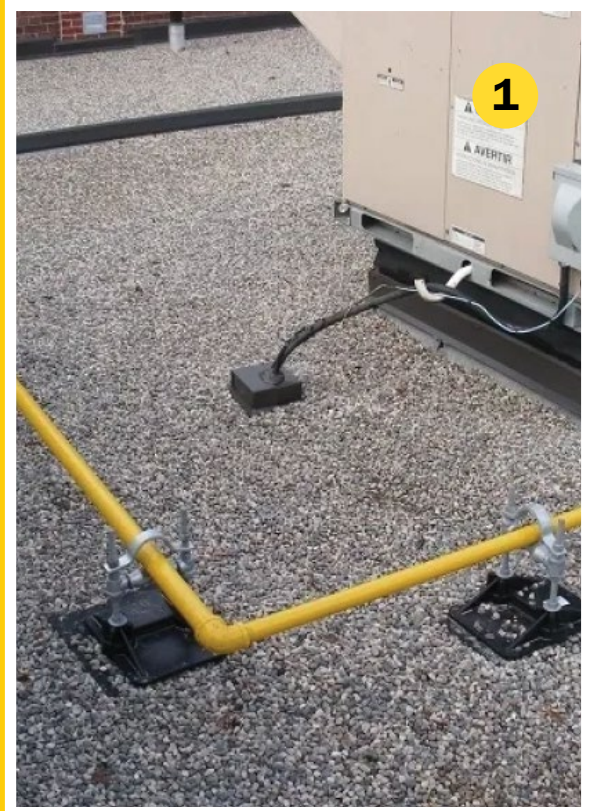
Water, ammonia, and conduit lines that frequently cross paths on rooftops present significant low-level trip hazards. These obstacles are especially dangerous because, in the event of a same-level fall, it can be challenging to get the injured person off the roof. This situation presents a unique and critical safety risk that needs to be effectively managed.

Keel Mini Step-Overs are designed to tackle this issue head-on. With non-slip treads for durability in any weather and weighted bottoms for maximum stability, this product makes it simple and safe to navigate over conduit, pipe work, and other low roof obstructions. The Keel Mini Step-Overs provide a secure and efficient means of crossing these hazards, ensuring that workers can move safely across the roof without the risk of tripping and falling. This solution not only enhances safety but also contributes to a more efficient and productive work environment on rooftops. By implementing Keel Mini Step-Overs, you are taking a proactive step towards protecting your

2 Objects and Obstructions

There are two potential dangers on rooftops caused by large barriers. First off, climbing over the obstructions puts workers at risk for fall accidents and equipment damage. Second, obstacles on the roof could cause workers to move closer to the leading edge than is necessary in order to get around the obstacle, increasing the risk of falls. Keel Safety Step-Overs offer a secure way to cross obstacles and objects on the rooftop, ensuring that workers can navigate safely without compromising their safety or the integrity of the equipment. By implementing these step-overs, you significantly reduce the likelihood of accidents and create a safer working environment for everyone involved.

OSHA General Duty Clause: Section 5(a)(1)





Kee Step Rooftop Crossovers: Safe Navigation Over Roof Obstacles

Kee Step Rooftop Crossovers provide safe and secure passage over rooftop obstacles like pipes and equipment. Designed with non-slip surfaces and handrails, these crossovers ensure workers can navigate complex roof layouts safely. They comply with safety standards, offering a durable and efficient solution for maintaining secure rooftop access.

FAQ

Rooftop Obstacles

1

What are common obstacles and hazards on rooftops?

Rooftops often feature various obstacles such as pipes, HVAC equipment, skylights, and uneven surfaces. These elements can create significant tripping and slipping hazards for workers, especially in adverse weather conditions. Ensuring these obstacles are marked and secured, and providing clear pathways is crucial for safety. Products like Kee Walk Rooftop Walkways and Kee Step Mini Steppers help mitigate these risks by providing structured and secure paths over and around these obstacles.

2

How do these systems integrate with existing safety measures?

Kee Safety systems are designed to seamlessly integrate with existing rooftop safety infrastructure, enhancing overall safety without disrupting current setups. For instance, Kee Walk Rooftop Walkways and Kee Platform systems can be easily installed alongside guardrails, safety nets, and other protective equipment. These systems provide clear, designated pathways over and around obstacles, complementing fall protection measures and ensuring comprehensive safety coverage. Their modular design allows for easy customization and extension, adapting to specific site requirements and ensuring all potential hazards are addressed effectively. This integration simplifies safety management and ensures compliance with regulatory standards, providing a cohesive and robust safety solution.

Kee Step Mini Stepmover

A range of modular, off-the-shelf step-overs that help your team navigate obstructions on a roof

Why do you need Kee Step Mini Stepmover?

Long-Lasting

Unlike its lumber-built alternative, Kee Step Mini Stepmovers are designed using galvanized components, PVC weights, and nylon treads – all with an extremely long life expectancy even in harsh rooftop environments.

Designed for Indoor and Outdoor Use

When used on rooftops the mini-step is designed with a custom PVC weight to eliminate the need for rooftop penetrations and provide wind resistance. For indoor or ground-based applications simply bolt the base flange to the surface.

Use anywhere on the roof

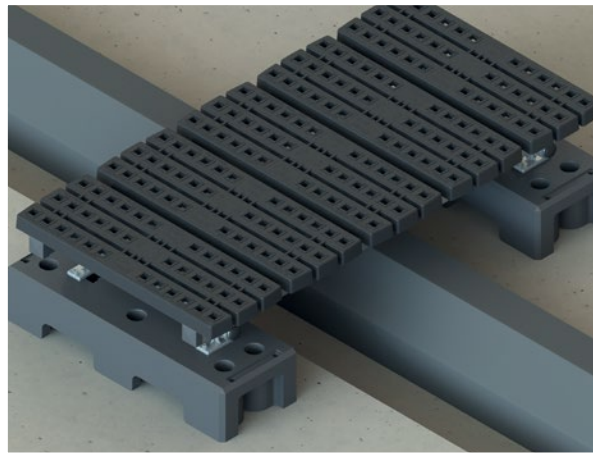
Roofs are cluttered with potential trip hazards, with conduit, ammonia lines, and ductwork commonly crisscrossing the walk path. Where a walk path and small obstruction meet we recommend installing Kee Step Mini Stepmovers to eliminate the trip hazard and protect your worker from a potential injury.

Kee Step Module Kits

Available as kits, the Step-Overs are supplied as flat packed with full assembly instructions to allow quick and easy installation.

A simple way to traverse obstacles such as pipework, cable trays, low level walls, and changes in level. Designed for modern roof types including trapezoidal, profile, composite, or built up and standing seam metal roofs.

Kee Step Mini Steps are designed to be compliant with OSHA 1910.23(e)(1)(iii), OSHA 1910.25(b)(3), OSHA 1910.23(c)(2-4), and OSHA 1910.23(e)(1)(vi).



Small in Size, Big on Safety

Roof surfaces can be extremely dangerous with varying levels, uneven surfaces, and multiple obstructions that need to be overcome. Kee Step Mini Step-Overs create a safe way to cross roof obstructions, such as pipework, plant equipment, and conduits. Suitable for use on a variety of roof types where there are changes in roof levels, our step-overs create a safe, anti-slip, level walking surface onto and across roofs.

Key features of Kee Step Mini Stepmover

- Safely Get Over Obstacles
- Range of Sizes
- Suitable for All Roof Types
- Standard Kit Formats
- Non-slip Treads
- High Fire Rating
- No Welding Needed
- Long Lasting



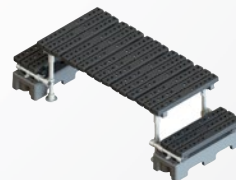
Single Step Short: SAP-S0-3B-NS
Clearance of 8" up & 9" across



Single Step Long: SAP-S0-5B-NS
Clearance of 8" up & 29" across



Double Step Short: SAP-S0-3B2S-NS
Clearance of 18" up & 21" across



Double Step Long: SAP-S0-5B2S-NS
Clearance of 18" up & 40" across



Keep Step Rooftop Crossovers

Creates a safe route over objects and obstructions on the rooftop without penetrating the roof membrane.

Why do you need Kee Walk Rooftop Crossovers?

Safe Rooftop Access

Our custom-built solutions will be tailored to meet the specific needs of your individual rooftop surface and provide a safe route over pipework, HVAC and other rooftop obstructions. Everything is engineered to meet OSHA safety standards and designed for maximum durability.

Traverse All Levels

Every rooftop is different. Shape and surface transitions require a step-over system that securely deals with changes in level and height. Kee Walk® Crossovers exceed the capabilities of other customized, fabricated, off-the-shelf platforms.

Modular Design

Each stepover can be specifically designed to suit your specific needs. Thanks to its modular components, we can design secure structures that are reliable, flexible and support your critical safety needs. And with no welding needed, installation is simple ensuring minimal on-site disruption.

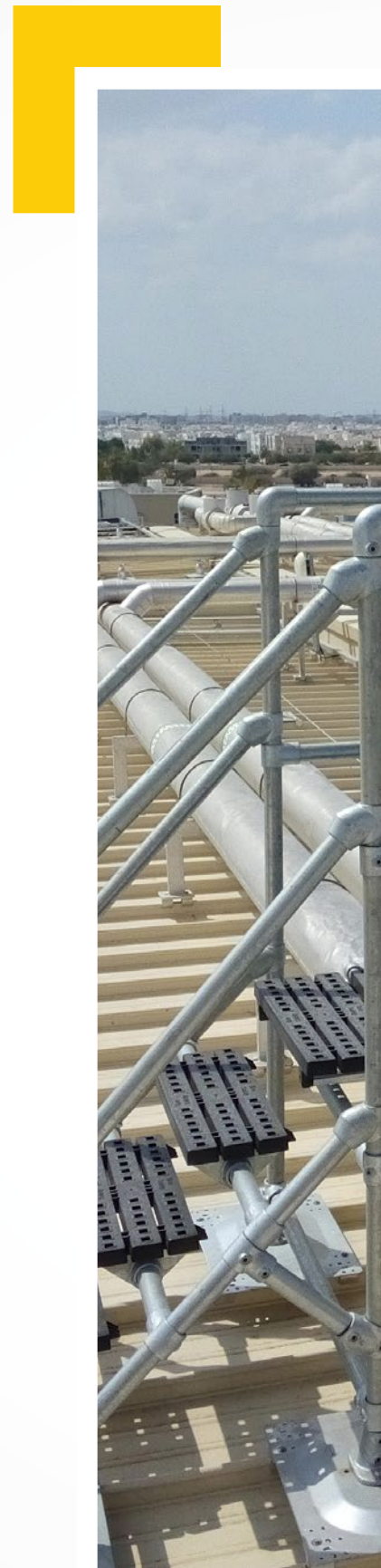


Safe Passage for your Workers

Workers avoid trip hazards or larger obstacles when working at height or ground level. Slip Resistant ensuring the treads are safe in all weather conditions.

Available in aluminum or galvanized steel for long-lasting protection, corrosion resistance and strength. Made from tubular fittings and standard modules so it can be installed on site without any welding.

Kee Step Rooftop Crossovers are designed to be compliant with OSHA 1910.23(e)(1)(iii), OSHA 1910.25(b)(3), OSHA 1910.23(c)(2-4), OSHA 1910.29(b)(1-3), and OSHA 1910.23(e)(1)(vi)





The top of all rooftop crossovers

Roof surfaces can be extremely dangerous places to work, but not if Kee Step is installed. It provides a safe, anti-slip, level walking surface to access areas of the roof and to safely walk across it. Step sections are adjustable and can be used on sloped roofs too. Added to this, it also protects the roof sheet from foot traffic.

Key features of Kee Step Rooftop Crossovers

- Safe Passage
- Easily Configured
- Standard Kit Formats
- No Welding Needed
- Exceeds Safety Standards
- Long Lasting
- Slip Resistant
- Suitable for All Roof Types

Kee Walk

Rooftop Walkway

A modular roof walkway system that is easy to install and exceeds all OSHA requirements

Why do you need Kee Walk Rooftop Walkways?

Suitable for All Roofs

Kee Walk® is designed for modern roof types including trapezoidal profile composite or built up and standing seam metal roofs. It can be used on flat, barrel, or sloping roofs, with steps and a traverse option so you can create access to virtually any roof configuration from 0 to 35 degrees.

Protects You and the Roof

Kee Walk® has been specially developed to give you total flexibility in creating safe access to all areas of a roof. Not only does it protect those accessing the roof, but it also protects the roof sheet itself. It does this thanks to its clearly defined access path eliminating foot traffic on the roof sheet.

Easy to Install

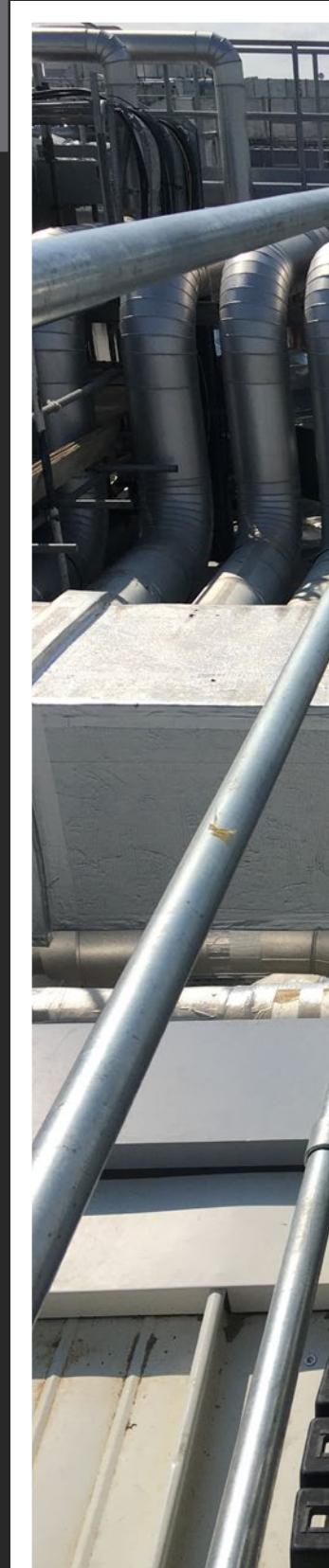
Modules are supplied as 1.5m and 3m pre-assembled sections to suit the needs of different roofs. The glass-reinforced nylon or aluminum treads are attached to aluminum support beams that are fixed to the roof surface. There are no unique parts needed.



Walkways that go above and beyond

Kee Walk® provides a safe, anti-slip, level walkway for workers who need to access a roof in the course of their work. Its intelligent design protects the roof surface from unnecessary damage and integrates easily with either guardrails or lifeline systems.

Thanks to clear on-roof demarcation, it helps to prevent the roof's surface being damaged. Designed for modern roof types including trapezoidal, profile, composite or built up and standing seam metal roofs. This flexible walkway system can be adapted for roof angles from 0 to 35 degrees and can be adjusted on site.





Keep Walk Guarded Walkway

The Kee Walk with guardrail system is a fall protection solution consisting of walkway and guardrail which can be installed quickly and easily on a wide variety of roofs. It is a compliant approach to guardrail protection and eliminates the fall hazard typically present when workers are exposed to an unprotected edge.

Kee Walk with Guardrail meets OSHA compliance for guardrail systems: Capable of withstanding, without failure, a force of at least 200 pounds (890 N) applied in a downward or outward direction within 2 inches (5 cm) of the top edge, at any point along the top rail.

Keep Walk with Guardrail Features

- Engineered for use on all roofing systems
- Accommodates sloped roofs up to 35° pitch
- Load-tested for compliance to OSHA Code 1910.29(b)(3)
- Slip-resistant treads available in standard Nylon grating
- Customizable design is adjustable to fit any rooftop

Keep Walk with Guardrail Benefits

- Non-penetrating solution - roof membrane will not leak
- Protects metal roofs from damage by foot traffic
- Collective system: protects all personnel; no training required
- Cost-effective: combining a defined pathway with Kee Guard® handrail
- Integrates easily with our fall protection products including Kee Line Horizontal Lifelines and Step-Over Platforms to form a complete rooftop fall protection solution

Installing Kee Walk with Guardrail

- Walkway modules supplied as 5 foot and 10 foot pre-assembled sections
- Guardrail can be installed on one or both sides of Kee Walk
- Modular galvanized steel guardrail for easy and fast on-site installation
- Available as a retrofit onto your existing Kee Walk system or installed as a new fall protection solution on your rooftop
- Professional installation services available



Kee Platform

Permanent safe access to perform tasks at height

Why do you need Kee Platform?

Enhanced Safety

Kee Platform provides a stable and secure working surface, reducing the risk of falls and accidents during elevated tasks.

Increased Efficiency

By offering easy access to difficult-to-reach areas, Kee Platform boosts productivity and minimizes downtime.

Versatile Application

Kee Platform is adaptable to various environments and tasks, ensuring reliable performance in diverse industrial settings.

Static Work Platform Benefits

Each of our platforms is designed to suit a specific application and is built in accordance with all safety standards. CAD drawings are typically supplied with each quotation to allow customers to visualize our proposal.

If the platform design needs to be modified to fit a different function, Kee Safety can easily re-engineer the existing platform to meet new requirements.

- Excellent strength and corrosion resistance
- Custom designed platform
- Short delivery lead times
- Minimal on-site disruption
- Safety assured when used correctly

Kee Static Work Platforms are designed to be compliant with OSHA 1910.23(e)(1)(iii), OSHA 1910.25(b)(3), OSHA 1910.23(c)(2-4), OSHA 1910.29(b)(1-3), and OSHA 1910.23(e)(1)(vi)



Flexible, Durable, and Effective

Kee® Static Work Platforms use Kee Lite® or Kee Klamp® tubular fittings to construct platforms to suit any application. Each platform is designed to your specific situation and built to exceed OSHA safety standards. Static work platforms are flexible, durable and effectively protect workers from the hazards of slipping and falling when working at height.

Features

- **Durable Construction:** Made from high-quality materials for long-lasting performance.
- **Easy Installation:** Designed for quick and simple setup.
- **Versatile Design:** Adjustable to fit various pallet sizes and configurations.
- **Safety Locking Mechanism:** Ensures secure operation to prevent accidental openings.
- **Compliant with Safety Standards:** Meets OSHA and other relevant safety regulations.

Benefits

- **Enhanced Safety:** Protects workers by preventing falls and ensuring safe access to palletized materials.
- **Increased Efficiency:** Streamlined design allows for quick loading and unloading of pallets.
- **Low Maintenance:** Robust construction reduces the need for frequent repairs or replacements.
- **Cost-Effective:** Long-lasting durability translates to lower long-term costs.
- **Improved Compliance:** Helps businesses meet safety regulations, reducing the risk of fines and accidents.



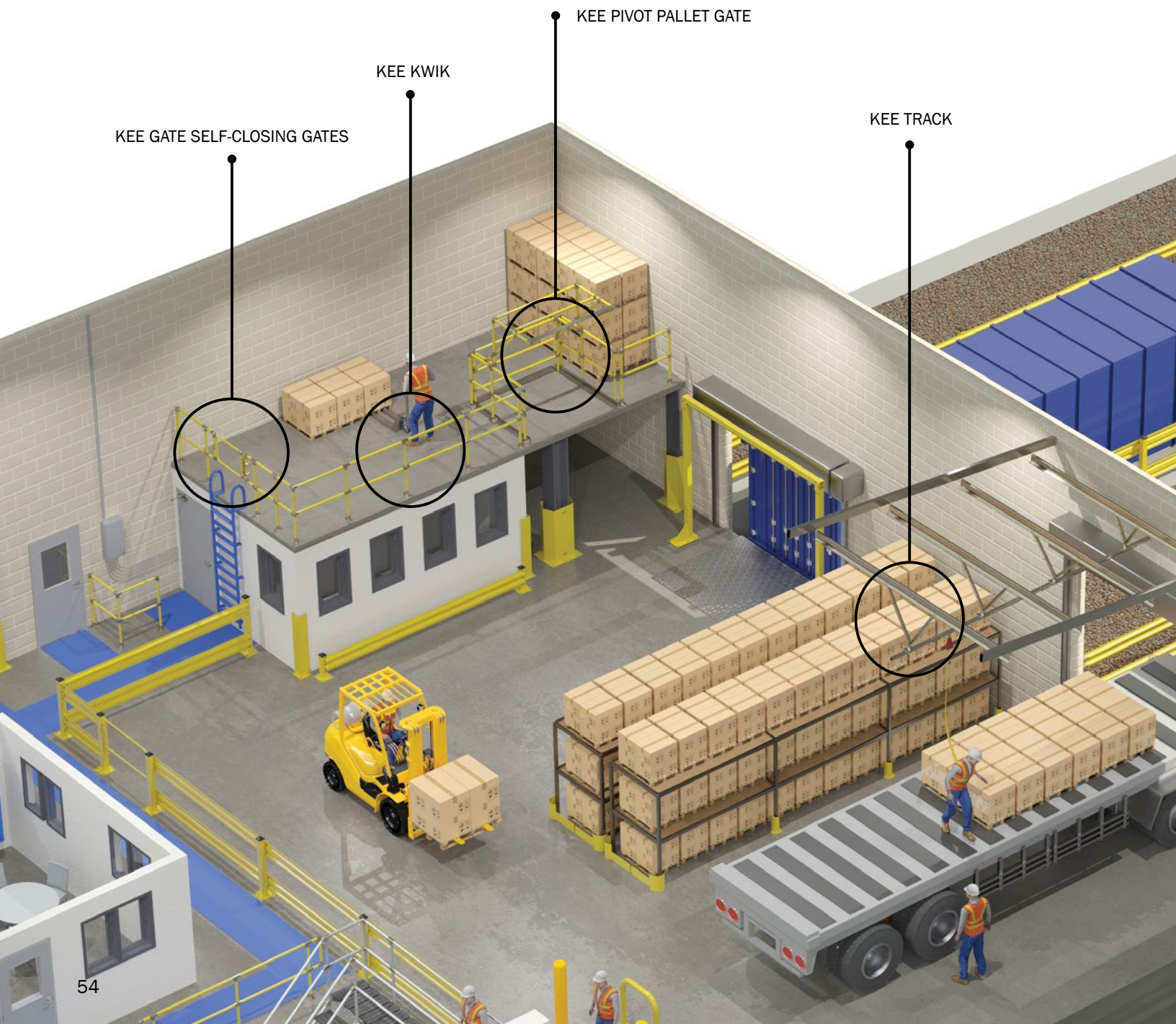
Identifying Danger Zones: Facility Falls

Protecting People from Fall Hazards

Fall hazards continue to rank number one in terms of OSHA citations. Fall hazards are among the most dangerous in the workplace, the second leading cause of work-related fatalities.

Safely Load & Unload Goods from Mezzanines

The loading and unloading of goods from Mezzanines can create a dangerous fall hazard if not properly protected. Kee Gate Pallet Gates are designed to protect people who are moving goods on and off the mezzanine. The easy to operate swing gate can be operated by one individual. Closing the gate on the mezzanine allows goods to be loaded. Opening the gate protects the loading edge so that workers can remove the goods.



Facility Falls: Warehouses & Interior Workplaces

Ensuring safety in a warehouse environment requires addressing various fall hazards. Our interior fall protection products provide robust solutions for elevated platforms, walkways, loading docks, and storage areas. With secure guardrails, safety gates, and overhead lifeline systems, we protect workers from falls and ensure OSHA compliance, enhancing safety and productivity.

1

Mezzanine Loading Areas

The loading and unloading of goods from Mezzanines can create a dangerous fall hazard if not properly protected. Kee Gate Pallet Gates are designed to protect people who are moving goods on and off the mezzanine. The easy to operate swing gate can be operated by one individual. Closing the gate on the mezzanine allows goods to be loaded. Opening the gate protects the loading edge so that workers can safely remove goods.



2

Unprotected Pedestrian Elevated Workzone

OSHA regulations specify that any fall hazard over 4 feet in height must be protected. The safest method of providing protection is separating people from fall hazards with railing. Kee Klamp Modular Railing protects people from falling from mezzanines.



3

Safezone Exit Points

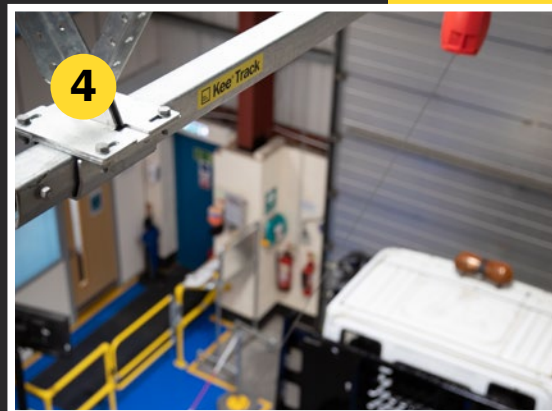
OSHA 1010.28 and 1910.29 requires the implementation of secure guardrail systems and self-closing safety gates to protect workers from accidental falls when exiting safe zones. Installing robust barriers and gates that automatically close maintains a continuous safety perimeter, preventing unauthorized access and minimizing fall risks. This approach enhances worker safety and ensures compliance with OSHA regulations.



4

Secure Overhead Safety

An overhead track system provides a secure anchor point for personal fall arrest systems, ensuring that workers are protected from falls while performing tasks at height. By offering continuous, hands-free protection, Kee Track enhances safety and compliance with OSHA standards. Its robust construction and easy installation make it an ideal solution for various industrial applications, providing peace of mind and a safer working environment.





Kee Kwik Railing Kits: Quick and Secure Guardrails

Kee Kwik Railing Kits offer a fast and effective solution for creating safe boundaries in various environments. These modular, easy-to-assemble kits provide durable guardrails that enhance safety by preventing falls. Designed for quick installation, Kee Kwik ensures compliance with safety standards and is ideal for both temporary and permanent applications.

FAQ

Warehouses & Facilities

1

What are the advantages of using modular railing systems in a warehouse?

Modular railing systems offer numerous benefits in a warehouse setting. They provide customizable safety barriers that can be easily installed, adjusted, or relocated as needed, allowing for flexibility in dynamic work environments. These systems help define safe walkways and restricted areas, reducing the risk of accidents by keeping workers and equipment separated from hazardous zones. Additionally, modular railings can be adapted to meet specific safety standards and requirements, ensuring compliance with regulations and enhancing overall workplace safety. Their durability and ease of maintenance further contribute to a safer and more efficient work environment.

2

How do Facility Safety measures enhance operational efficiency?

Implementing comprehensive safety measures in a facility not only protects workers from accidents but also significantly enhances operational efficiency. A secure environment minimizes the risk of injuries, which can lead to reduced downtime and fewer disruptions in workflow. With reliable safety systems in place, employees can focus on their tasks without concerns about potential hazards, leading to increased productivity and morale. Moreover, a safe workplace reduces the likelihood of costly legal issues and insurance claims, further benefiting the overall operation.

Kee Gate

Self-Closing Safety Gates

Choose high quality, fully compliant, and extensively tested self closing safety gates.



Why do you need Kee Self-Closing Safety Gates?

Different Options

Kee Gate® Access is available with three different options. These are the single-width gate, double-width gate and full height gates. This means you can find the gate that best suits your site – from small areas to larger areas to ladders. You can also easily cut the gates to size on site.

Self Closing

Our gates are spring-loaded so will automatically close behind the user. Spring-loaded safety gates are considered the preferred solution to chains, bars or sliding tubes when protecting these areas as they automatically close behind a person, overcoming the problem of human error.

Extensively Tested

The safety gates passed salt spray testing to ASTM B117-11-55 Neutral solution over 200 hours to assess the performance of coating to resist corrosion. Our gates were also abuse tested and the mechanism tested to over 50,000 open/close cycles. See our downloads section for the full report.

Enhance Workplace Safety

Kee Safety Self-Closing Safety Gates provide a robust and reliable solution for safeguarding access points in industrial and commercial settings. Engineered from durable, corrosion-resistant materials, these gates automatically close behind the user, ensuring continuous protection without the need for manual intervention. Designed to meet OSHA standards, the self-closing mechanism enhances workplace safety by preventing accidental falls from unprotected edges, ladders, and openings. Easy to install and adjustable to fit various sizes and configurations, Kee Safety Self Closing Safety Gates are the ideal choice for maintaining a secure and compliant work environment.

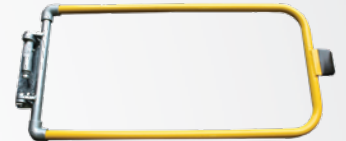


Access the safest gate around

A fully adjustable range of self-closing safety gates for use in rooftop or industrial environments. Safety gates are ideal for protecting any openings, ladder/stair access points, roof hatches, walkways, access to industrial machinery and other restricted areas, where regular access for maintenance and inspection is needed..



Galvanized finish



Powder coated finish

Features

- Heavy duty, hot-dipped galvanized steel
- Powder coated or galvanized finish
- Spring-loaded to close automatically
- Perfect for rooftop, exterior, or indoor use
- Supplied with u-bolts for secure, quick assembly to existing structures and posts
- Additional fastener packs available

Easy Integration

- Easily installed using simple hand tools
- Integrates into existing guardrails and customizable to fit your needs
- Available in 9 sizes from 18" - 48"
- Seamlessly mounts to all Kee Klamp or Kee Guard systems or retrofits to your existing system



OSHA Compliant

- Exceeds OSHA standards
- Cycle Tested to ensure quality
- Self-closing provides constant safety
- Durable, high quality solution

Kee Kwik

Railing Kits

Create a sturdy railing system with no welding or threading that exceeds OSHA safety standards.

Why do you need Kee Kwik Railing Kits?

Easy to Install

Install Kee Kwik using a standard hex key to tighten the large, easy-to-use set screws. This simple hand tool is essentially all you need to create a sturdy railing system – there's no welding or threading. And because your uprights are pre-assembled, installation is fast.

Easy to Adapt

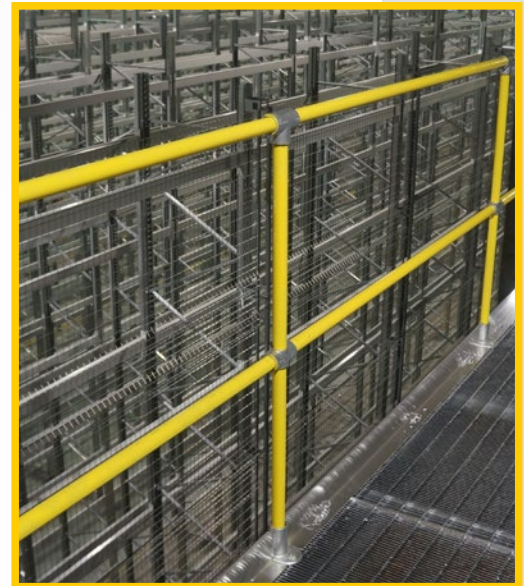
By using a combination of our straight, corner and extension kits, you can achieve almost any standard railing configuration. Rails can also be cut where shorter sections are required and are available in both galvanized steel and aluminum.

Easy to Stay Safe

The safety yellow coating makes Kee Kwik highly visible. Our safety coating is applied on top of galvanization to ensure maximum corrosion resistance. Kee Kwik exceeds OSHA and IBC standards and utilizes reliable Kee Klamp® or Kee Lite® safety components.

Kee Kwik is easy to install

The Kee Kwik from Kee Safety is a versatile and robust quick-assembly guardrail system designed to provide immediate protection for workers at height. Constructed from durable, high-quality materials, Kee Kwik offers a flexible solution that can be rapidly deployed and adjusted to fit various configurations and environments. Its intuitive design ensures easy installation without the need for specialized tools or equipment, making it an ideal choice for temporary or permanent safety requirements. Compliant with OSHA standards, Kee Kwik is the reliable choice for enhancing workplace safety and reducing the risk of falls and injuries.





Speed your way to great protection

Quickly protect workplace areas and provide a safe environment with Kee Kwik railing kits. There is no need to weld or bend tubing because the pre-assembled uprights make installation speedy and simple. Safety Yellow coating comes standard, making the railing highly visible..



Straight Kit
Kwik SS-or-Kwik AS
(Aluminum)

Includes:

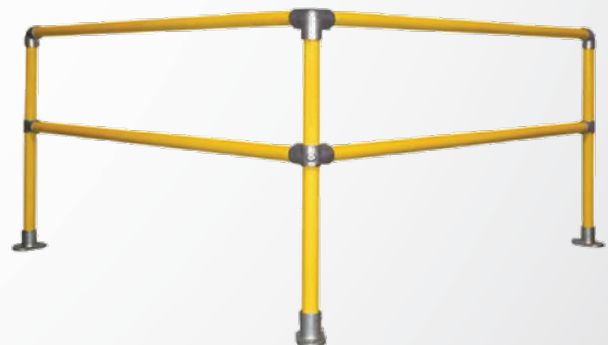
- (2) end uprights
- (1) middle upright
- (4) 6' horizontal rails



Extension Kit
Kwik SE-or-Kwik AE
(Aluminum)

Includes:

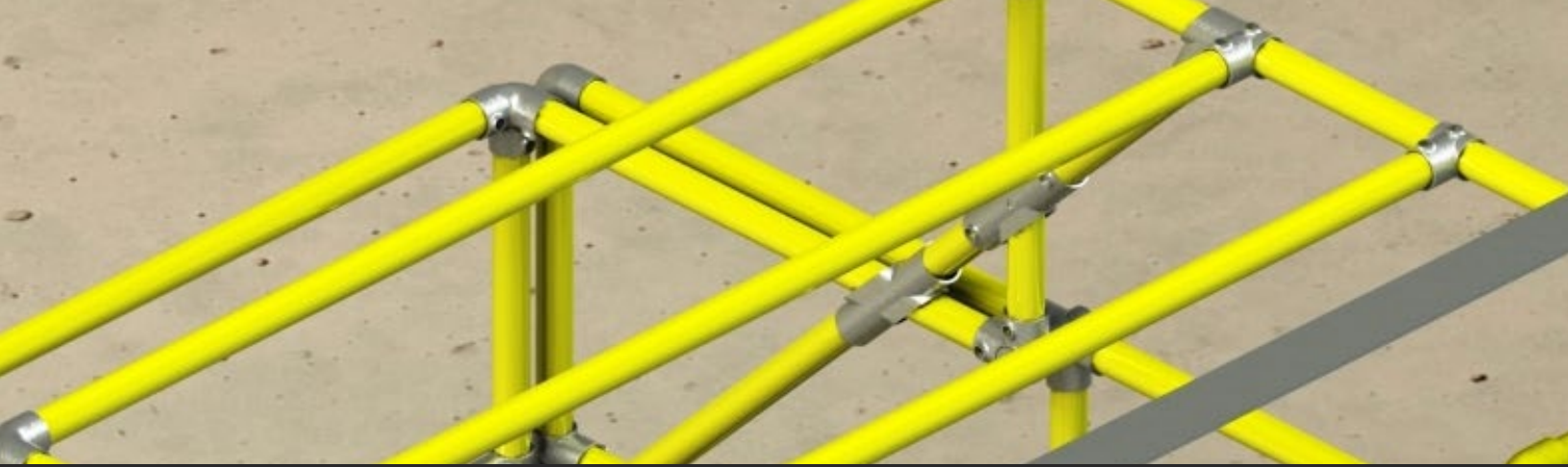
- (1) middle upright
- (2) 6' horizontal rails



Kwik SC-or- Kwik AC
(Aluminum)

Includes:

- (2) end uprights
- (1) corner upright
- (4) 6' horizontal rails



Kee Pivot

Pallet Gates provide safe access to pallets onto mezzanine levels

Why do you need Kee Gate Pallet?

Quality

Our pallet gates are designed to seamlessly integrate with new or existing guardrails, ensuring continuous protection while moving goods on mezzanines.

Multiple Configurations:

The Kee Gate® Pallet offers four configurations, providing flexibility in width and depth while maintaining 6'6" head clearance.

Easy Maintenance:

Constructed with Kee Klamp® and Kee Lite® fittings, the gates allow for easy replacement of individual fittings if damaged, ensuring long-term durability and functionality.

Mezzanine Safety Gates

Designed to provide safe access for factory and warehouse workers who are responsible for loading and unloading pallets onto mezzanine floors or raised working surfaces.

Any damage can be easily repaired, keeping the gate operational. Available in galvanized steel or aluminum depending on requirements. Minimal number of moving parts for lower maintenance.

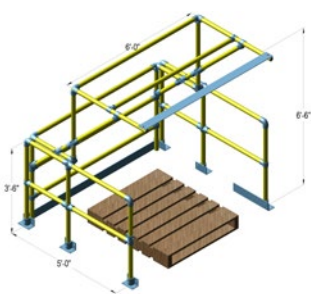




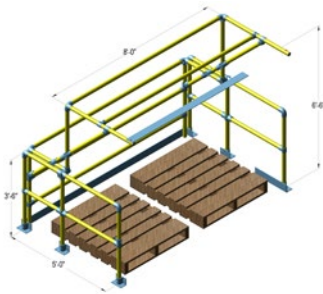
Raising the bar of safety

Moving pallets around factories and warehouses can cause several safety issues. When a worker needs to load and unload pallets on mezzanine floors, they could end up falling from a height. Kee Gate® pallet gates eliminate this safety issue. A simple solution that results in employees always being separated from the hazard.

Choose from Four Configurations



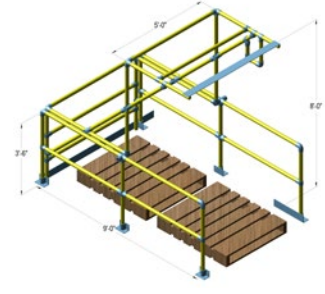
Standard Pallet Gate: 6' x 5'



Double Width Pallet Gate: 8' x 5'



Full Size Pallet Gate: 8' x 9'



Double Depth Pallet Gate: 5' x 9'

Features

- **Durable Construction:** Made from high-quality materials for long-lasting performance.
- **Easy Installation:** Designed for quick and simple setup.
- **Versatile Design:** Adjustable to fit various pallet sizes and configurations.
- **Safety Locking Mechanism:** Ensures secure operation to prevent accidental openings.
- **Compliant with Safety Standards:** Meets OSHA and other relevant safety regulations.

Benefits

- **Enhanced Safety:** Protects workers by preventing falls and ensuring safe access to palletized materials.
- **Increased Efficiency:** Streamlined design allows for quick loading and unloading of pallets.
- **Low Maintenance:** Robust construction reduces the need for frequent repairs or replacements.
- **Cost-Effective:** Long-lasting durability translates to lower long-term costs.
- **Improved Compliance:** Helps businesses meet safety regulations, reducing the risk of fines and accidents.

Kee Track

Rigid Rail Fall Protection System

Why do you need Kee Track?

Easier Installation

Unlike other fall arrest systems, Kee Track® is designed for an easier and speedier installation. Your system can be specified through simple on-site measurements, and constructed with our off-the-shelf components. You'll be safely up and running with the least interruption to your schedule.

Less Expense

Rigid rail systems are less susceptible to degradation and need less maintenance than other systems. This saves money by reducing downtime and interruptions. What's more, the simplicity of Kee Track® allows for full safety compliance with minimal training, ensuring productivity and safety are kept to a maximum.

A Safer System

The Kee Track® system's rigid track stops a fall with a shorter drop. This reduces the chance of worker injury and damage to sensitive equipment. The system also eliminates the pendulum effect that can tug at other workers on the system and cause further damage or injury.

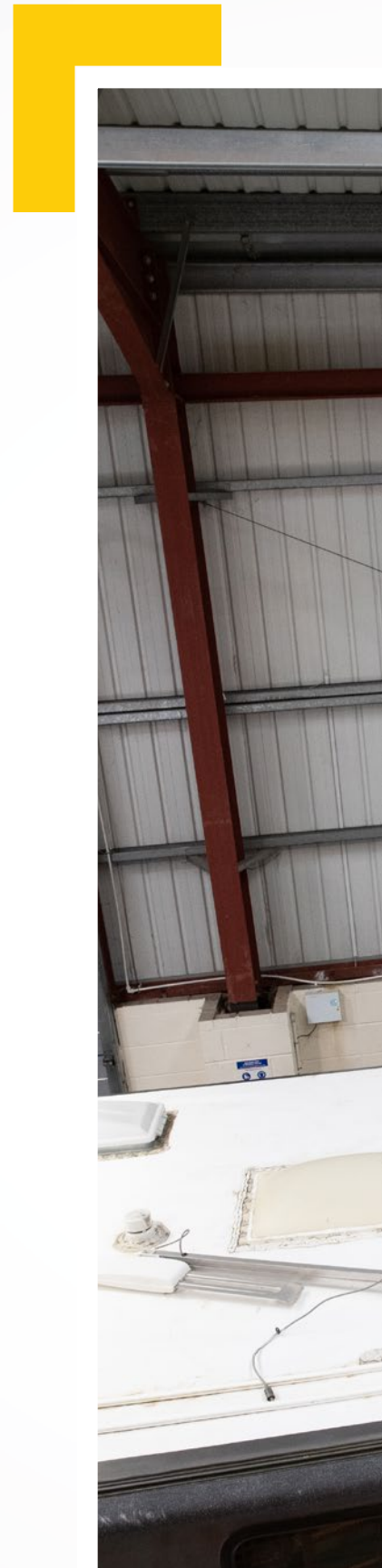


Stay on Track with Kee Track Rigid Rail Fall Protection System

Our rigid rail overhead track system offers the safety of short fall arrest distances with the ease, economy and flexibility of modular installation.

Compliance: Tested to meet OSHA 29 CFR 1910.140 & 1926.502

Kee Track® has a unique range of mounting options which ensures a secure installation for a wide variety of roof designs. It is particularly effective when users work at short free-fall distances, such as carrying out operations on RV's, trains, trucks and aircraft with low ground clearances. Added to this, the lightweight trolley with sealed bearings allows complete hands-free movement throughout the system.





Is Kee Track Right for Your Industry?

More often than not, floor space is precious. The Kee Track® system's roof mounted low-profile rails maintain an open floor plan for production, storage and material handling while providing exceptional overhead fall protection. The system complements warehouses and facilities with both high and standard roof heights. It requires no column supports and works around most roof infrastructures.

Protecting your most valuable assets - Whenever the distance required to stop a fall is small, a track system should be utilized. A short fall distance is not only vital for protecting an individual, but also the equipment being worked on. A fall on equipment such as an aircraft wing or delicate manufacturing equipment can result in expensive repairs..

A Solution for All Roofs

One of the main advantages of Kee Track® is the unique range of mounting options. The system can be made secure to internal roof structures such as beams, trusses, and concrete. Where necessary, bespoke connectors can be supplied.

For primary and secondary steelwork: Kee Track works with the columns, rafters and bracing of primary steelwork, and the purlins of secondary steelwork.

Kee Track Components



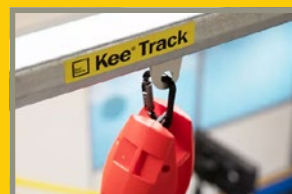
Clamshell Bracket

This patent-pending bracket allows for easier installation. Instead of threading the rail on the ground, the rail can be placed in position after the bracket is partially installed.



Purlin Bracket

Kee Track® purlin bracketry allows the system to be attached in both a parallel and perpendicular format.



Kee Track Trolley

Our trolley has high-quality bearings to keep your system running smoothly for years to come.

OSHA Industry Standards

OSHA standards have been updated to reflect industry fall protection requirements. Fall Protection OSHA standards are central to the use of this Rooftop Safety Audit.

Discussions on roof safety can be overwhelming regarding OSHA regulations, inspections, and regional standards. Kee Safety can assist you with a full understanding of the OSHA codes that are applicable to your specific rooftop safety concerns.

1

Access Points: 1910.28(b)(3)(iv)

Each employee is protected from falling into a ladder way, floor hole, or ladder way platform hole by a guardrail system and toe boards erected on all exposed sides, except at the entrance to the hole, where a self-closing gate or an offset must be used*

*Chains are no longer permitted for use as a fall protection system on rooftop access points.

2

Rooftop Openings: 1910.28(b)(3)(i)

Each employee is protected from falling through any hole (including skylights) that is 4 feet (1.2 m) or more above a lower level by one or more of the following:

- Covers
- Guardrail Systems
- Travel Restraint Systems
- Personal Fall Arrest System

3

Unprotected Edges: 1910.28(b)(13)

When work is performed less than 6 feet (1.6 m) from the roof edge, the employer must ensure each employee is protected from falling by a guardrail system, safety net system, travel restraint system, or personal fall arrest system.

When work is performed at least 6 feet (1.6 m) but less than 15 feet (4.6 m) from the roof edge, the employer must ensure each employee is protected from falling by using a guardrail system, safety net system, travel restraint system, or personal fall arrest system. The employer may use a designated area when performing work that is both infrequent and temporary.

When work is performed 15 feet (4.6 m) or more from the roof edge, the employer must: protect each employee from falling by a guardrail system, safety net system, travel restraint system, or personal fall arrest system or a designated area.

The employer is not required to provide any fall protection, provided the work is both infrequent and temporary; and implement and enforce a work rule prohibiting employees from going within 15 feet (4.6 m) of the roof edge without using fall protection in accordance with paragraphs (b)(13)(i) and (ii) of this section.

Key OSHA Terms:

Definition of Temporary and Infrequent

Infrequent means that the work is performed occasionally. Infrequent work is usually performed once a year, once a month, or as needed. Examples include annual equipment maintenance, replacing batteries monthly or quarterly, and responding to occasional equipment breakdowns.

Daily, regular, or routine tasks are not infrequent.

Temporary means that the work is brief or short. Temporary work takes less time than the time it takes to set up conventional fall protection. Temporary tasks usually take less than two hours to complete and are not complicated. These tasks can be completed in a single visit without having to climb up and down multiple times. Examples include changing a filter in a rooftop HVAC system, replacing a part on a satellite dish, and resealing the flashing around a skylight.



OSHA-Compliant Fall Protection Solutions

Our experts provide tailored solutions and support, ensuring your safety systems not only comply with OSHA standards, but also protect your workers effectively. With Kee Safety, you can trust that your fall protection solutions are both reliable and compliant, providing peace of mind and enhanced workplace safety.



Kee Safety: Leaders in Fall Protection

Kee Safety specializes in providing innovative and reliable fall protection solutions across various industries. With a focus on safety compliance and quality, Kee Safety offers a comprehensive range of products designed to protect workers and prevent accidents. From guardrails and safety gates to lifeline systems, Kee Safety is committed to creating safer work environments worldwide.

Ensuring Safety, Every Step of the Way

At Kee Safety, our mission is to provide innovative and reliable fall protection solutions that ensure the safety and well-being of workers across various industries. From comprehensive rooftop safety systems to robust guardrails and versatile lifeline solutions, our products are designed with one goal in mind: to keep people safe from hazards. Our commitment to excellence and compliance with stringent safety standards makes Kee Safety a trusted partner in creating safer work environments.

Our extensive range of products, including Kee Line, Kee Guard, Kee Hatch, Kee Dome, and Kee Mark Warning Line, is engineered to meet the diverse needs of our clients. Whether you are securing a rooftop, a warehouse, or any other industrial space, Kee Safety offers tailored solutions that integrate seamlessly into your safety protocols. Our products not only enhance safety but also improve operational efficiency, ensuring that your workforce can perform their tasks with confidence and security.

We understand that every project is unique, which is why we provide expert consultation and support to help you design and implement the most effective safety solutions. Our team of safety professionals is dedicated to walking your site, assessing potential risks, and recommending the best products to address your specific needs. By choosing Kee Safety, you are investing in the highest level of protection and peace of mind.

Thank you for considering Kee Safety as your partner in fall protection. We look forward to working with you to create a safer, more secure workplace. For more information or to discuss your safety needs, please contact us. Together, we can build a safer future for your organization.

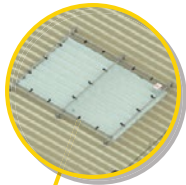
ROOFTOP FALL PROTECTION

Integrated solutions that incorporate a complete rooftop fall protection system is essential for protecting workers from falls on rooftops. This means addressing hazards such as skylights and roof openings, in addition to providing guardrails or other fall protection equipment at the edge of the roof. By implementing a comprehensive fall protection system that includes safety gates, screens, or covers, as well as proper anchor points and personal protective equipment, employers can help ensure that workers are able to safely perform their jobs without the risk of falling from height.

Kee Guard® Topfix



Kee Cover®



Kee Hatch®



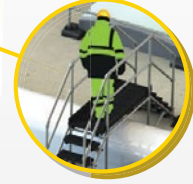
Kee Gate®



Kee Dome®



Kee Step®



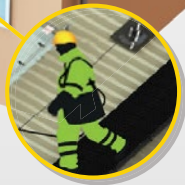
Kee Guard®



Kee Walk®



Kee Line®



Kee Anchor®





Committed to Safety, Trusted Worldwide.

Keen Safety is dedicated to providing innovative fall protection solutions that safeguard workers on rooftops and beyond. With our industry-leading products, we ensure that your safety is never compromised. Trust Keen Safety for reliable, compliant, and effective solutions that protect lives every day.

Kee Safety: Your Fall Protection Experts

Kee Safety is the leading expert and global manufacturer of safety components and fall protection systems. We are fully committed to Separating People from Hazards. Kee Safety has a proud history of engineering, manufacturing, and supplying the most trusted fall protection solutions, safety railing systems, and safe access equipment for working at height.



SEPARATING PEOPLE FROM HAZARDS

www.keesafety.com | 800.851.5181